



# TWO HANDS OPERATED NUTTOOL USER MANUAL

## E-410NV-T

DESIGNED IN FRANCE BY  
**Scell-it®**



min.

**M4**



max.

**M10**

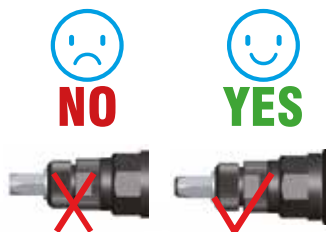
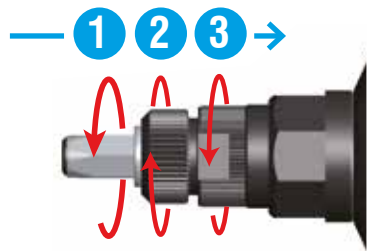
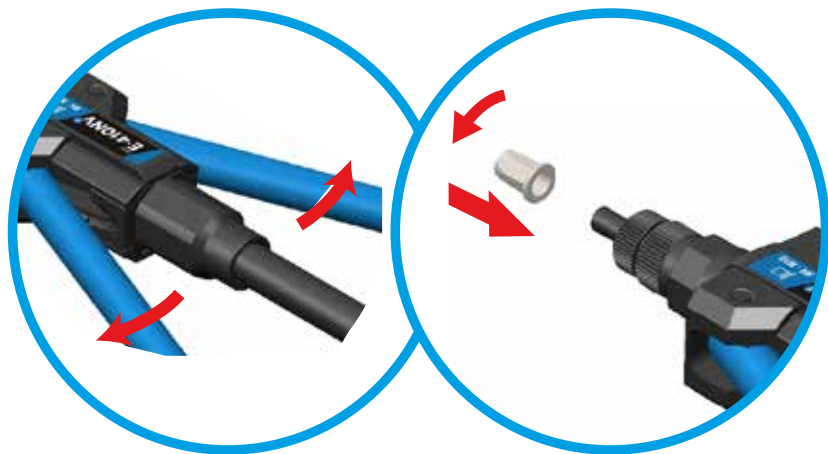


# TOOL CAPACITIES AND SPECIFICATIONS

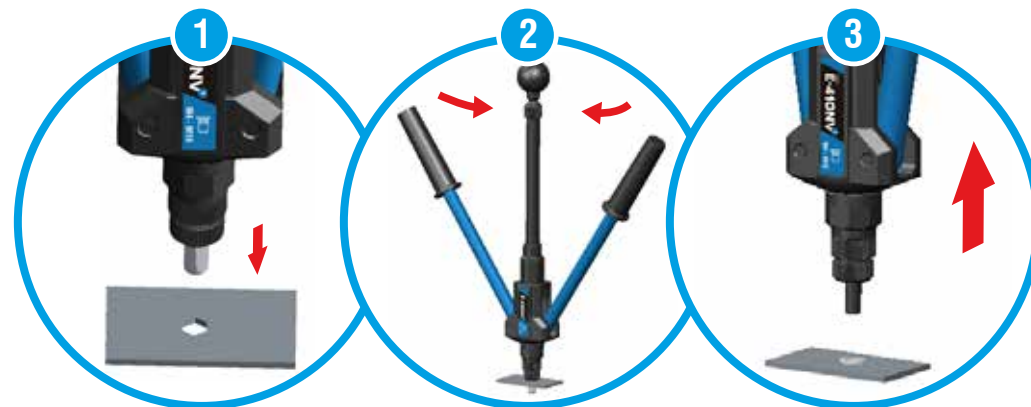
**Capacities:** M4 to M10  
**Length:** 485 mm  
**Weight:** 2.2 kg  
**Levers:** Steel  
**Handle material:** ABS



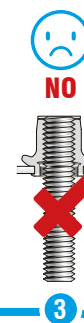
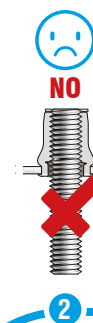
## SETTING



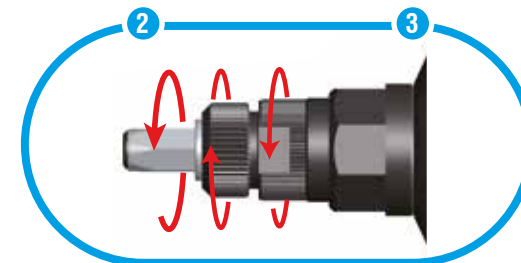
## OPERATION



## FINISH SETTING



- 1 Correctly set
- 2 Not fully set
- 3 Over-set. Do not pull the rivnut up too tightly as you may strip the thread in the rivnut or damage the tool mandrel.



# UNINSTALLATION OF PULLER

**1. SCREW OFF ANVIL AND LOCKNUT**



**2. PULL OUT THE PULLER**



**3. INSERT THE PULLER FROM THE TOOL FORWARD**



**4. SCREW ON LOCKNUT THEN ANVIL**



Note : anvil size and puller size shall be the same