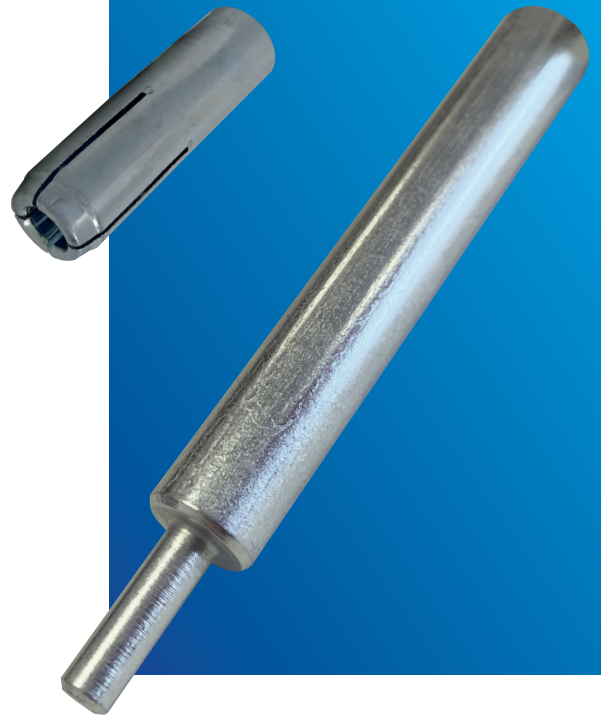


Drop in anchor SETTING TOOL

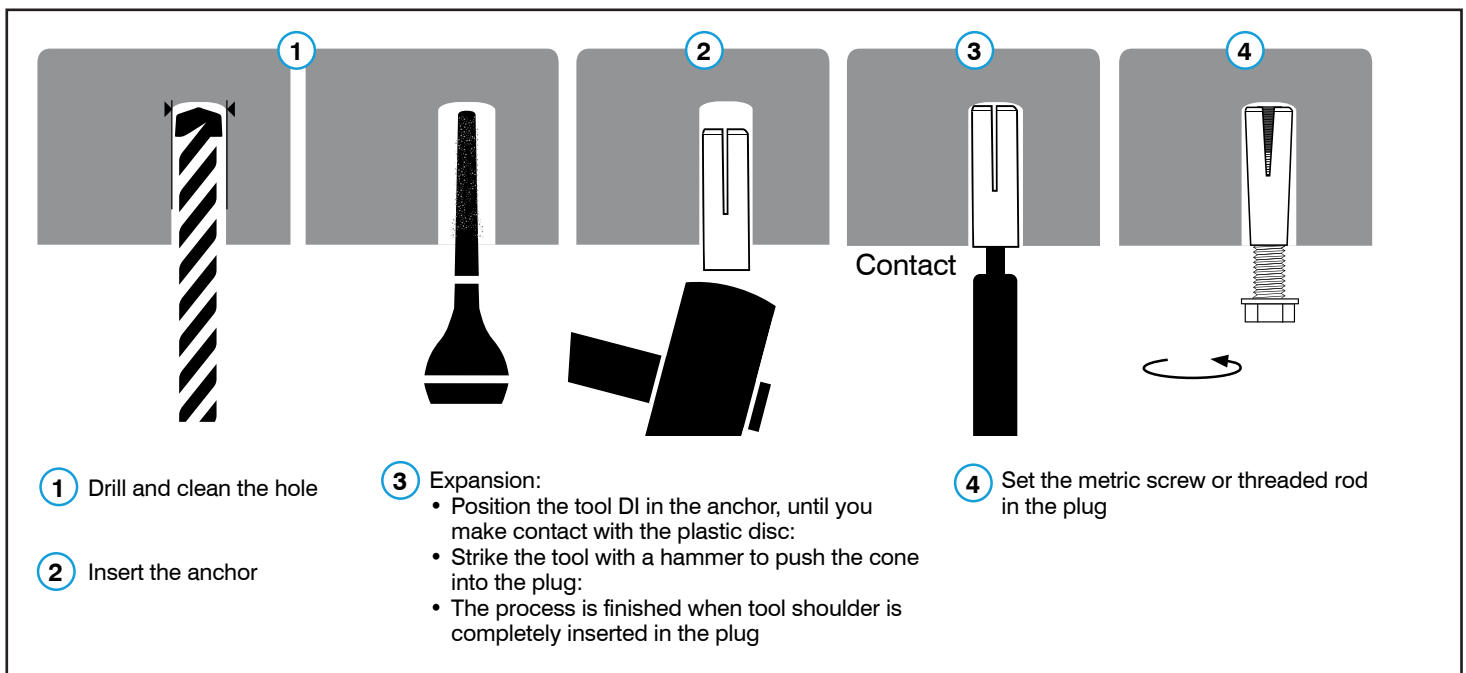
Description

Setting tool DI-TOOL guarantees a controlled expansion and setting of Drop in anchors.



Item code	Size	Qty Per Box	Qty Per outer	Weight Per 100
	Ø			
	mm			kg
DI-TOOL-6	M6	1	200	6
DI-TOOL-8	M8	1	200	6
DI-TOOL-10	M10	1	100	10
DI-TOOL-12	M12	1	100	19
DI-TOOL-16	M16	1	50	36
DI-TOOL-20	M20	1	50	45

Installation instructions



- 1 Drill and clean the hole
- 2 Insert the anchor
- 3 Expansion:
 - Position the tool DI in the anchor, until you make contact with the plastic disc:
 - Strike the tool with a hammer to push the cone into the plug:
 - The process is finished when tool shoulder is completely inserted in the plug
- 4 Set the metric screw or threaded rod in the plug