

## CORDLESS RIVET NUT TOOL

FOR BLIND NUT M3 TO M6

E-008

ELEMENT  
ZERO ZERO EIGHT 008

## SPECIFICATIONS

## Traction power:

6,000 N

## Stroke:

1-9 mm

## Weight (incl. battery):

1.25 kg

## Autonomy:

1 battery charge

(blind nuts M6 cylindrical steel  
= 320)

## Battery:

18 V Li-ion - 2.0 Ah with  
charger indicator.

## Charger:

18V - battery charging time  
2.0 Ah = 100% in 30 minutes

## Warranty:

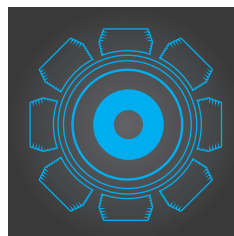
1 year

## FEATURES



## STROKE SETTING KNOB:

- 1 TO 9 MM
- PITCH = 0.5 MM



## BRUSHLESS MOTOR (COAL FREE):

- INCREASE DURABILITY (REDUCES WEAR)
- LESS ENERGY (BETTER AUTONOMY)
- NOISE REDUCTION

SAME BATTERY AND CHARGER AS  
OTHER ELEMENT TOOLS

## FAST CHARGE IN 30 MIN



## CAPACITY

NUTS	M3	M4	M5	M6	M8
ALUMINIUM - STEEL - STAINLESS STEEL					
	✓	✓	✓	✓	
	✓	✓	✓		
SPYDER XS - STEEL					
		✓	✓	✓	✓*

## REFERENCES



Rigid

carrying case.

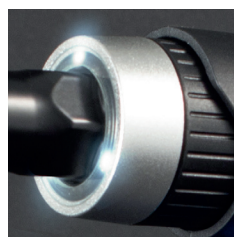
## • Accessories included:

- 4 nosepieces and mandrels M3-M4-M5-M6 for blind nuts.

(\*nosepieces and mandrels M8 available as an  
option for installation of SPYDER XS in M8)

- 1 rigid carrying case (version E-008-1XBAT)

REFERENCE	CONTENTS				
	NUT TOOL E-008	BATTERY 18V Li-Ion - 2.0Ah	QUICK CHARGER 18V	ACCESSORIES	RIGID CARRYING CASE
E-008-1XBAT	1	1	1	1	1
E-008-BODY	1			1	
E-BATT		1			
E-CHARG			1		



## 3 LEDS TO ILLUMINATE THE WORK ZONE



## SMOOTH TRIGGER AND GRIP

# OPERATING INSTRUCTIONS



- 1 Mandrel
- 2 Nosepiece
- 3 Stroke setting dial
- 4 Trigger
- 5 Unlock battery buttons
- 6 Battery charge test button
- 7 Battery charge indicator
- 8 LED lights
- 9 Reverse button

## • ADJUSTING THE STROKE:

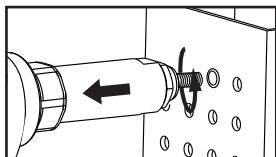
Adjust the stroke setting dial ⑨ to adjust the stroke depth for crimping.

Blank test on a rivetnut to reach the optimum crimp.



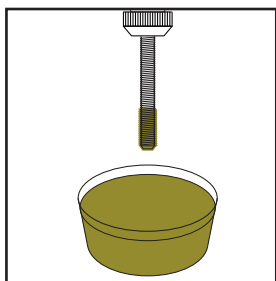
## • BLIND NUT INSTALLATION:

1. Use the reverse button ⑨ is in the «Screwing» position (i.e. pushed in on the right side)
2. Manually screw the rivetnut on the mandrel
3. Insert the nut into the hole, ensuring correct alignment hole-nut-tool
4. Press the trigger ④ to set the rivetnut
5. Release the trigger ④ to unscrew and release the mandrel



### IMPORTANT :

Aid the automatic unscrewing by pulling the tool back slightly.



In order to reduce wear and avoid risk of blockage, it is highly recommended to regularly add some grease on the end of the mandrel approximately every 5 rivetnut settings.

(pot of grease supplied).

Simply dip the mandrel into the pot and wipe off the excess with a cloth if necessary.

## • TO CHANGE MANDRELS:

See user manual.

## • LED LIGHTS:

The tool is equipped with 3 powerful LED lights ⑧ to light up the working area.

### Turn on the light only

Press the trigger half way to turn on the light. The lights will shutdown after 10 seconds.

### Turn on the tool with the lights on

Press the trigger ④. The lights turn on and remain on until 10 seconds after the trigger is released.

## • REMOVE THE BATTERY:

Battery is locked to the riveting tool with a spring.

To remove the battery, press the 2 unlock buttons ⑤ and slide the battery.

Do not force it.

## • BATTERY LEVEL INDICATOR:

4 lights on the battery panel allows you to check the remaining power. Press and hold the blue button ⑥ to check the battery level:

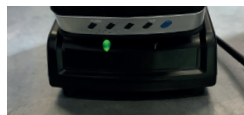
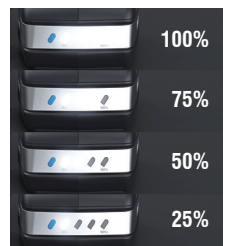
4 lights on : 100% remaining

3 lights on : 75% remaining

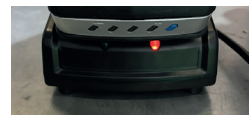
2 lights on : 50% remaining

1 light on : 25% remaining

The information on the battery panel can vary (+/- 5%) due to environmental conditions.



Green light on the charger: the battery is fully charged



Red light on the charger: the battery has to be charged

# MAINTENANCE / TROUBLESHOOTING / SAFETY INFORMATION

See details and illustrations in user manual.



Beacon Industrial Estate - Weston road - Stafford ST18 0DG - Tel: 01785 246539 - sales@scellit.co.uk - www.scellit.co.uk