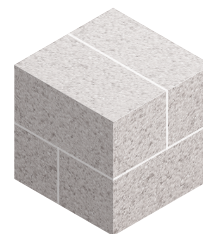
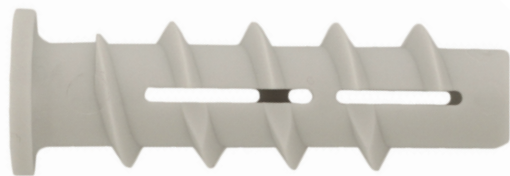


# SCREW IN PLUG FOR AERATED CONCRETE

**KBT**

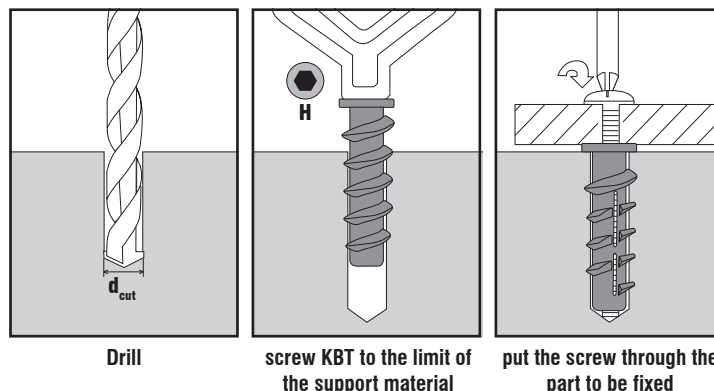


AERATED CONCRETE

## FEATURES

- 100% nylon
- For cellular concrete
- Can be used with ordinary screws, hex lags or metric thread screws
- Very good temperature resistance (-40° to 85°C)
- Good pull out values

## INSTALLATION

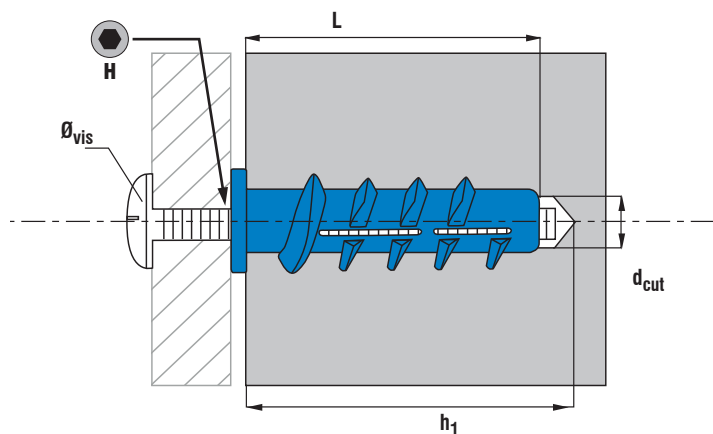


Drill

screw KBT to the limit of the support material

put the screw through the part to be fixed

## DIMENSIONS



Ø	L	d <sub>cut</sub>	H	h <sub>1</sub>	Ø <sub>screw</sub>	Reference
mm	mm	mm	mm	mm	mm	
<b>6.0</b>	50	10	6	70	5.0-6.0/M6	<b>KBT06</b>
<b>8.0</b>	60	12	8	80	7.0-8.0/M8	<b>KBT08</b>
<b>10.0</b>	70	14	10	90	9.0-10.0/M10	<b>KBT10</b>

## RECOMMENDED LOADS

given for information,  
in cellular concrete blocks of 500 kg/m<sup>3</sup>.

