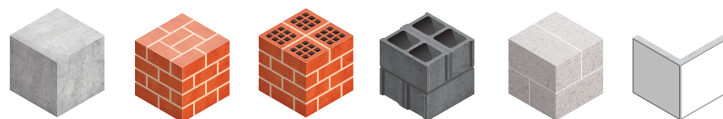


UNIVERSAL PLUG METRIC THREAD

ZITA


CONCRETE
SOLID BRICK
HOLLOW BRICK
CONCRETE BLOCK
AERATED CONCRETE
DRYWALL



FEATURES

Materials:

- halogen-free nylon (PA6) plug with a metallic insert, with metric thread
- steel screw with metric thread
- 4.8 grade steel washer, white zinc plated

Advantages:

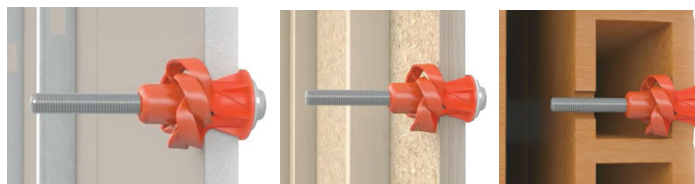
- Versatile: excellent performance by «swelling» in solid materials and by «knotting» in hollow materials
- Removable plug
- Withstand temperature from -40°C to 80°C
- Comes with a M5 cylindrical head screw
- Other versions available on demand: with an eye (ZITA-P), angle (ZITA-G) or hook (ZITA-C.)

2 TYPES

ZITA 10X49

- Red colour
- M5 x 55 screw

- 5 to 18 mm wall thickness mounting : drywall, wood, hollow brick ...



Solid wall mounting : concrete, aerated concrete, solid brick.



ZITA 10X59

- Black colour
- M5 x 65 screw

- 18 to 30 mm wall thickness mounting : concrete blocks, double drywall



Solid wall mounting : concrete, aerated concrete, solid brick.



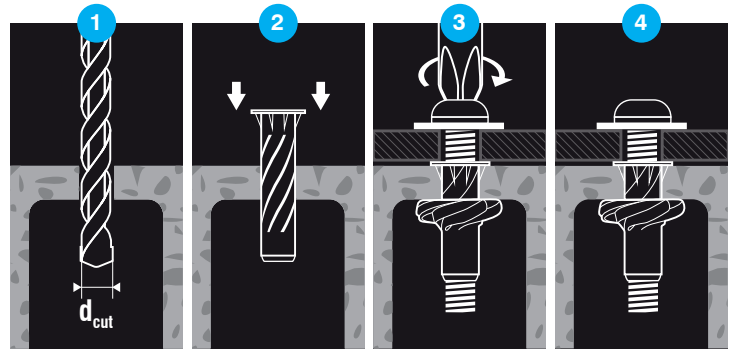
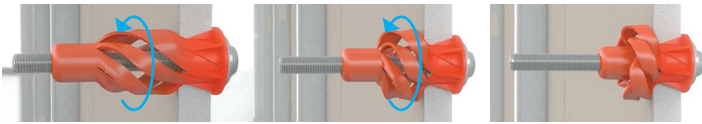
INSTALLATION

- 1 Drill the hole according to the indicated diameter
- 2 Insert the ZITA plug
- 3 Position the object to be fixed against the wall, place the metallic washer, then screw through the object with a PZ2 bit (best with an electric tool) to expand the plug

- 4-a In solid materials expansion by swelling happens almost immediately after starting to screw

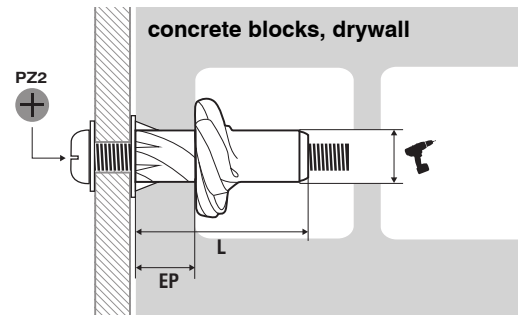
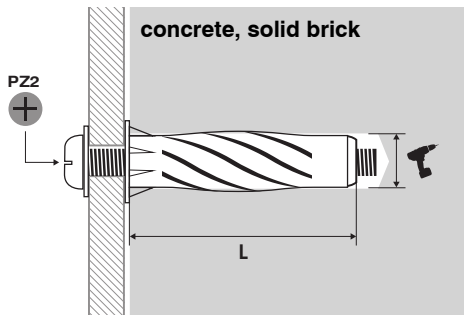


- 4-b In hollow materials by knotting of the plug behind the wall screw completely until you feel resistance which indicates the plug is well 'locked'



DIMENSIONS & APPLICATION DATAS

Plug			Screw	EP	Reference
$\emptyset \times L$	Color	\emptyset drill mm	$\emptyset \times L$	wall thickness	
10 x 49	Red	10	M5 x 55	5 - 18 mm	ZITA10X49-MT
10 x 59	Black	10	M5 x 65	18 - 30 mm	ZITA10X59-MT



RECOMMENDED LOADS

These recommended loads are given for reference only for drywall mounting on which a partial safety factor is applied $f = 3$.

