



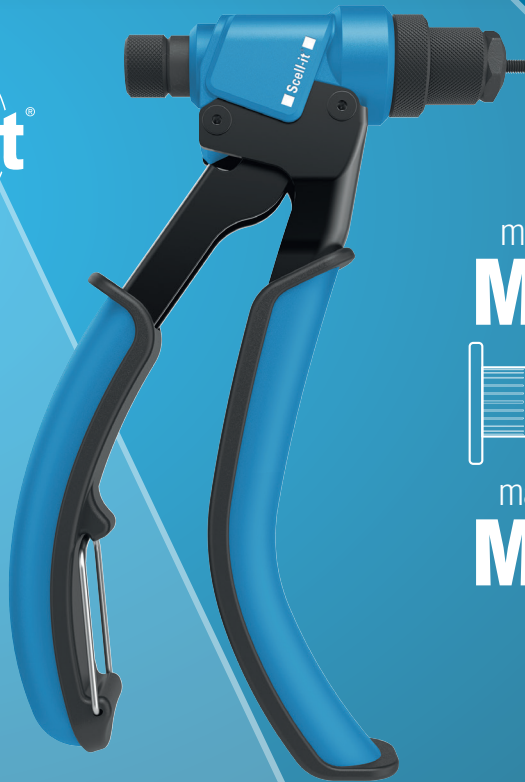
RIVET NUT TOOL

INNOVATION

USER MANUAL



N 100



min.
M3



max.
M6



SPECIFICATIONS

Length: 220mm

Weight: 500 g

Body and handles material: Allow cast aluminium and steel

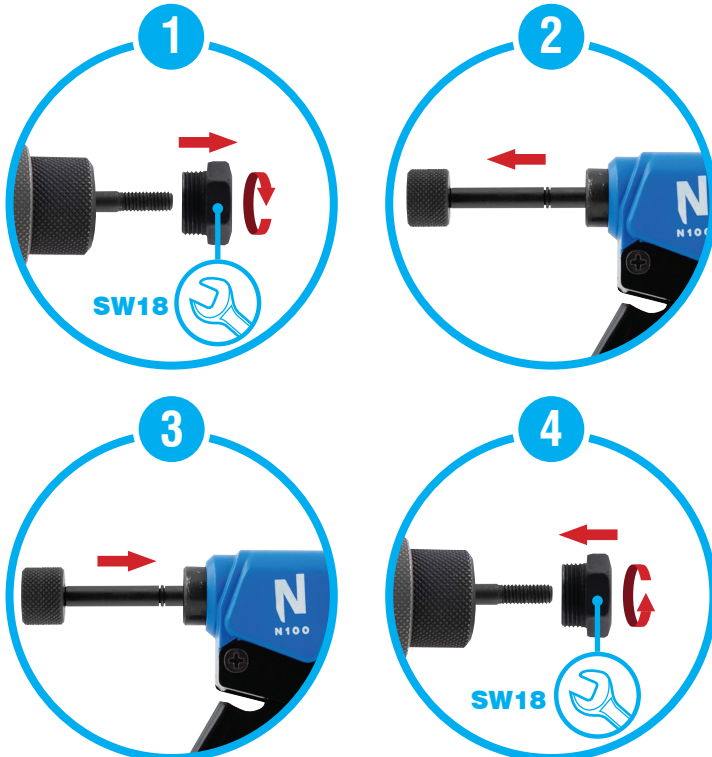
Handles grip material: ABS

Capacity:

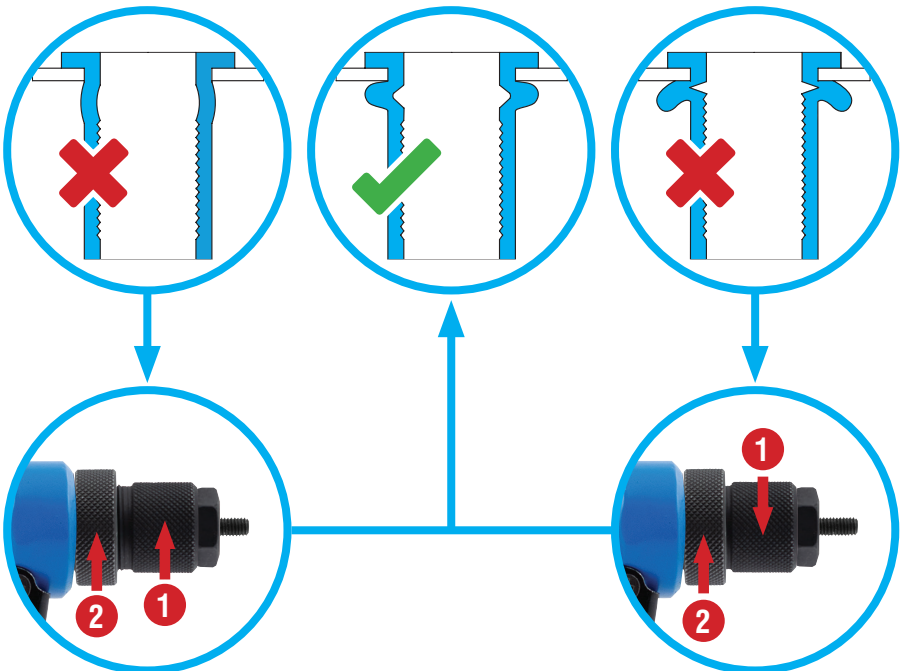
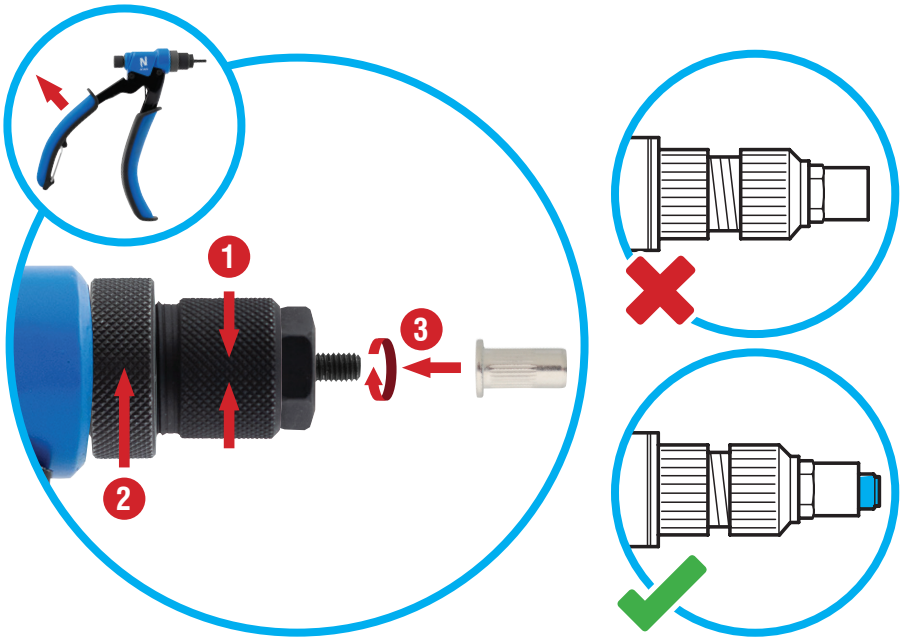
RIVET NUT	M3	M4	M5	M6
ALUMINIUM	✓	✓	✓	✓
STEEL	✓	✓	✓	
STAINLESS STEEL	✓	✓	✓	



REPLACING PULLER AND NOSE PIECE



STROKE SETTING



OPERATION





28 rue Paul Dubrule - 59810 Lesquin - FRANCE

www.Scellit.com