

USER MANUAL



ELEMENT
ZERO ZERO EIGHT **008**

**CORDLESS RIVET
NUT TOOL**
FOR BLIND NUT

min.  max.
M3 - M6

Scell-it®

EN

FR

PL

CZ

IT

SPECIFICATIONS



• Accessories included:

- 4 nosepieces and mandrels M3-M4-M5-M6 for blind nuts.
(*nosepieces and mandrels M8 available as an option for installation of SPYDER XS in M8)

REFERENCE	CONTENTS				
	NUT TOOL E-008	BATTERY18V Li-Ion -2.0Ah	QUICK CHARGER 18V	ACCESSORIES	RIGID CARRYING CASE
E-008-1XBAT	1	1	1	1	1
E-008-BODY	1			1	
E-BATT		1			
E-CHARG			1		

TOOL




cordless rivet nut tool for blind nut
M3 TO M6

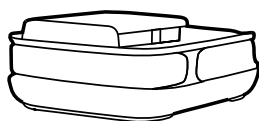
Force de traction : **6 000 N**

Course : **1-9 mm**

Poids (avec batterie) : **1,25 kgs**

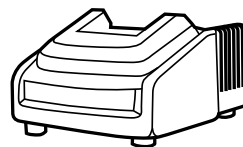
CAPACITY

NUTS	M3	M4	M5	M6	M8
ALUMINIUM - STEEL - STAINLESS STEEL					
	✓	✓	✓	✓	
	✓	✓	✓		
SPYDER XS - STEEL					
		✓	✓	✓	✓*



BATTERY

Rated Voltage: **18V**
 Battery Type: **Li-ion**
 Cells: **5 cells**
 Capacity: **2.0 Ah**
 Weight: **0.36 kgs**



CHARGER

Input Voltage: **100-240VAC/50-60Hz**
 Output Voltage: **18VDC**
 Output Current: **2.5A max.**
 Weight: **0.37 kgs**

IT IS ESSENTIAL THAT ALL OF THE SAFETY PRECAUTIONS, WARNINGS AND OPERATING INSTRUCTIONS IN THIS MANUAL ARE READ AND UNDERSTOOD BEFORE OPERATING OR MAINTAINING THIS POWER TOOL.

IMPORTANT SAFETY INFORMATION

WARNING:

Read all safety warnings and all instructions. Failure to follow the warnings and instructions may result in electric shock, fire and/or serious injury. Save all warnings and instructions for future reference.

Work area

1. Keep work area clean and well lit. Cluttered and dark areas invite accidents.
2. Do not operate power tools on explosive atmospheres, such as in the presence of flammable liquids, gases or dust. Power tools create sparks which may ignite the dust of fumes.
3. Keep children and bystanders away while operating a power tool. Distractions can cause you to lose control.

Electric safety

1. Do not expose power tools to rain or wet conditions. Water entering a power tool will increase the risk of electric shock.

Personal safety

1. Stay alert, watch what you are doing and use common sense when operating a power tool. Do not use a power tool while you are tired or under the influence of drugs, alcohol or medication. A moment of inattention while operating power tools may result in serious personal injury.
2. Use personal protective equipment. Always wear goggles. Protective equipment such as dust mask, non-skid safety shoes, hard hat, or hearing protection used for appropriate conditions will reduce personal injuries.
3. Prevent unintentional starting. Ensure the switch is in the off-position before connecting to power source and/or battery pack, picking up or carrying the tool. Carrying power tools with your finger on the switch or energizing power tools that have the switch on invites accidents.

4. Remove any adjusting wrench or wrench before turning the power tools on. A wrench or wrench left attached part of the power tool may result in personal injury.

5. Do not overreach. Keep proper footing and balance at all times. This enables better control of the power tool in unexpected situations.

6. Dress properly. Do not wear loose clothing. Keep your hair, clothing and gloves away from moving parts. Loose clothes or a long hair can be caught in moving parts.

Power tool use and care

1. Do not force the power tool. Use the correct power tool for your application. The correct power tool will do the job better and safer at the rate for which it was designed.

2. Do not use the power tool if the on-off switch is defective. Any power tool that cannot be controlled with the switch is dangerous and must be repaired.

3. Disconnect the battery from the power tool before making an adjustment, changing accessories, or storing power tools. Such preventive safety measures reduce the risk of starting the power tool accidentally.

4. Store the power tool out of the reach of children and do not allow persons unfamiliar with the power tool or these instructions to operate the power tool. Power tools are dangerous in the hands of untrained users.

5. Maintain your power tool. Check for misalignment of binding of moving parts, breakage of parts and any other condition that may affect the power tools operation. If damaged, have the power tool repaired before use. Many accidents are caused by poorly maintained power tools.

6. Use the power tool, accessories and tool bits etc., in accordance with these instructions and in the manner intended for the particular type of power tool, taking into account the working conditions and the work to be performed. The use of the power tool for operations different from intended could result in a hazardous situation.

Service

1. Have your power tool serviced by a qualified repair person using only identical replacement parts. This will ensure that the safety of the power tool is maintained.

Specific warnings

1. Hold power tool by insulated gripping surfaces, when performing an operation where the fastener may contact hidden wiring.

Fasteners contacting a «live» wire may make exposed metal parts of the power tool «live» and could give the operator an electric shock.

IMPORTANT SAFETY INSTRUCTIONS FOR CHARGER & BATTERY

1. Before using the battery charger, read all instructions and cautionary markings on battery charger, battery, and product using battery.

2. Do not expose battery & battery charger to water, rain or snow.

3. Use power tool only with specifically designated battery packs. The use of any other battery packs may create a risk of injury and fire.

4. Do not charge at voltage higher than indicated as charger specification; otherwise, the charger will burn up.

5. Recharge only with the charger specified by the manufacturer. A charger that is suitable for one type of battery pack may create a risk of fire when used with another battery pack.

6. To reduce risk of damage of the charger plug and cord, pull by plug when disconnecting battery charger.

7. Make sure charger is located so that it will not be stepped on, cord tripped over, or otherwise subjected to damage or stress.

8. An extension cord should not be used unless absolutely necessary. The use of improper extension cord could result in a risk of fire and electric shock. If extension cord must be used make sure, it is correct and property connected.

9. Do not operate battery charger with damaged cord or plug - replace them immediately.

10. Do not operate battery charger if it has received a sharp blow, been dropped, or otherwise damaged in any way; send it back to a qualified service engineer.

11. To reduce risk of electric shock, unplug charger from receptacle before attempting any maintenance or cleaning. Removing the battery will not reduce this risk.

12. Never recharge a fully charged

battery. Overcharging shortens the battery service life.

13. Under abusive conditions, liquid may be ejected from the battery; avoid contact. If contact accidentally occurs, flush with water. If liquid contacts eyes, additionally seek medical help. Liquid ejected from the battery may cause irritation or burns.

14. Suitable charging environment:

a. Charging temperature:

0°C ~40°C (32°F~104°F)

b. Discharging temperature:

0°C ~40°C (32°F~104°F)

c. Storage temperature:

-20°C ~60°C (-4°F~140°F)

Please wait one-hour first before charging, if the battery pack is stored under 0°C (32°F).

15. Storage instructions of battery:

When battery pack is not in use, keep it away from other metal objects like paper clips, coins, wrenches, nails, screws, or other small metal objects that can make a connection from one terminal to another. Shorting the battery terminals together may cause burns or a fire.

a. If battery pack is at a low temperature (under -20°C / -4°F) its chemical elements will be in solid state and resistance in charging will become too high for the battery to be charged.

b. If battery pack is at a high temperature (above 60°C / 140°F), its chemical elements will be in a vapor state that can make the battery ineffective in a short time.

16. The lithium battery safe protection function:

a. The «low-voltage protect function» will start when the lithium battery is used the first time. Please charge the

lithium battery to prevent battery from damage.

b. After using, the temperature of the lithium battery will keep rising. When the temperature of the lithium battery exceeds the max temperature, battery "temperature protects function" will start.

The lithium battery will be locked to prevent dangerous overheating please wait till the lithium battery cools down.

c. The overload on the battery can cause a voltage peak on the tool. The lithium battery pack will start "electric current overload protection function" to protect the lithium battery and battery PCB. In this situation, the protecting function will stop the tool for a few seconds. If the tool can not be used after few minutes, the lithium battery might be in "low-voltage protecting function" or "temperature protecting function". Please follow above mentioned ways to relieve.

17. A small leakage of liquid from the battery pack may occur under extreme usage or temperature. This does not necessarily indicate a failure of the battery pack. However, if the outer seal is broken and this leakage comes into contact with your skin: Wash the affected area quickly with soap and water. Neutralize the liquid with a mild acid such as lemon juice or vinegar. If the leakage gets in your eyes. Flush your eyes with clean water for a minimum of 10 minutes and seek immediate medical attention. Inform the medical staff that the liquid is a 25-35% solution of potassium hydroxide.

18. Do not store or carry a spare battery pack in a pocket or toolbox or any other place where it may come into contact with metal objects. The battery pack may be short circuited causing damage to the battery pack, burns or

a fire. If storing or disposing the battery pack, cover the terminals with a heavy insulation tape to ensure short circuit cannot occur. Batteries, when stored for a long period of time, will discharge.

19. DANGER: If the battery pack is cracked or damaged in any other way, do not insert it in the charging base. There is a danger of electric shock or electrocution.

20. WARNING: Do not allow any liquid to come into contact with the charger. There is a danger of electric shock.

21. Do not place any object on the top of the charger as it could cause overheating. Do not place the charger near any heat source.

22. Do not disassemble the charger. Take it to an authorized service center when service or repair is required. Incorrect re-assembly may result in the risk of fire, electric shock or electrocution.

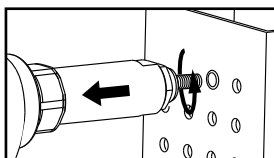
23. This appliance is not intended for use by persons (including children) with reduced physical, sensory or mental capabilities, or lack of experience and knowledge, unless they have been given supervision or instruction concerning use of the appliance by a person responsible for their safety.

24. If the supply cord is damaged, it must be replaced by the manufacturer, its service agent or similarly qualified persons in order to avoid a hazard.

OPERATING INSTRUCTIONS

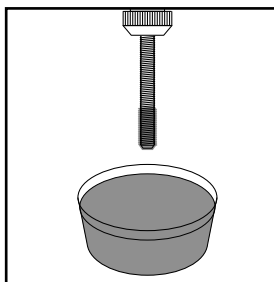
● BLIND NUT INSTALLATION:

1. Set the reverse button **9** to the 'screwing' position (i.e. pushed in on the right side).
2. Manually screw the rivetnut on the mandrel
3. Insert the nut into the hole, ensuring correct alignment hole-nut-tool
4. Press the trigger **4** to set the rivetnut
5. Release the trigger to unscrew and release the mandrel



IMPORTANT :

Aid the automatic unscrewing by pulling the tool back slightly.



In order to reduce wear and avoid stoppages, it is highly recommended to regularly add some grease on the end of the mandrel approximately every 5 rivetnut settings. (pot of grease supplied).

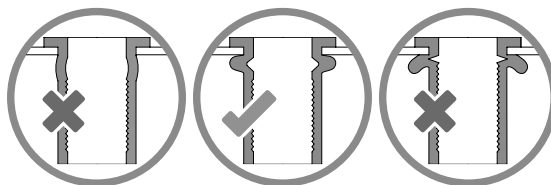
Simply dip the mandrel into the pot and wipe off the excess with a cloth if necessary.



● ADJUSTING THE STROKE:

Adjust the stroke setting dial **3** to adjust the stroke depth for crimping.

Blank test on a rivetnut to reach the optimum crimp.



● HOW TO REMOVE THE BATTERY:

Battery is locked to the riveting tool with a spring.

To remove the battery, press the 2 unlock buttons **5** and slide the battery.

Do not force it.

2 REPLACE THE MANDREL

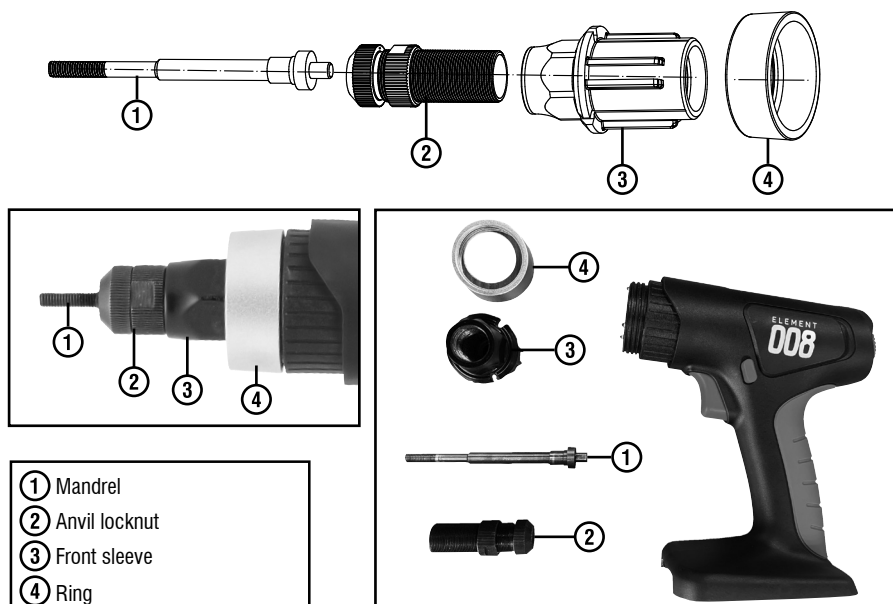
EN

FR

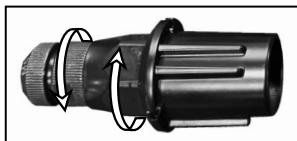
PL

CZ

IT



1. Remove the battery
2. Unscrew the ring ④
3. Remove ②+③ from the body, separate the mandrel ①
4. Separate ② and ③ by unscrewing



5. Then reassemble the 3 parts with the new anvil and mandrel:
 - Screw the anvil ② in the front sleeve ③ assemble the mandrel ①
 - Reassemble the ①+②+③ assembly on the tool by aligning the LEDs with the small notches



6. Screw the silver ring ④

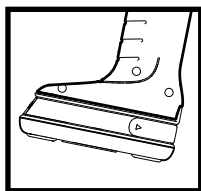
EN

FR

PL

CZ

IT



3 BATTERY LEVEL INDICATOR

4 lights on the battery panel allows you to check the remaining power. Press and hold the blue button **6** to check the battery level:

4 lights on : 100% remaining

3 lights on : 75% remaining

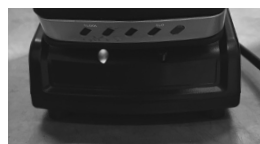
2 lights on : 50% remaining

1 light on : 25% remaining

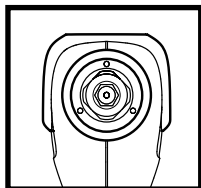
The information on the battery panel can vary (+/- 5%) due to environmental conditions.



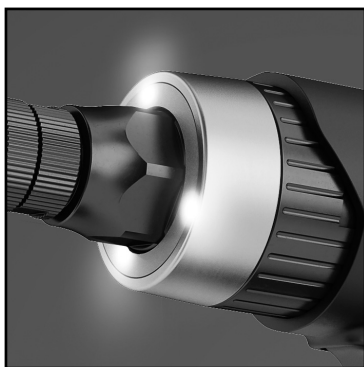
Red light on the charger: the battery has to be charged



Green light on the charger: the battery is fully charged



4 LED LIGHTS



The tool is equipped with 3 powerful LED lights **8** to light up the working area.

Turn on the light only

Press the trigger half way to turn on the light. The lights will shutdown after 10 seconds.

Turn on the tool with the lights on

Press the trigger to set the blind nut. The lights turn on and remain on for 10 seconds after the trigger is released.

TROUBLESHOOTING

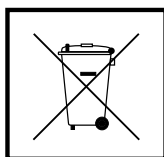
Trouble	Reason	Solution
Flashing LED	Low battery charge or damaged battery	Charge or replace the battery
	Tool capacity exceeded	Check working limits of the tool.
	Tool overheating	Let the tool cool down for a moment
Hard to screw the hollow wall anchor on the mandrel	Worn or damaged mandrel	Replace mandrel

WARRANTY CONDITIONS

During the warranty period, the customer must not perform any alterations other than those permitted by the manufacturer (maintenance). The repairs must be done by an authorized service center.

To admit warranty repair, the customer must return the defective tool to the service center of the manufacturer with the proof of purchase. Warranty is valid only if the tool is in its warranty period (12 months from the date of purchase confirmed by the proof of purchase) and if the conditions of use have been respected.

Warranty is not valid if worn spare parts have to be replaced (further to a normal use of the tool).



DISPOSAL OF OLD ELECTRICAL & ELECTRIC EQUIPMENT

This product (including battery and charger) shall not be treated as household waste. It shall be handed over the applicable collection point for the recycling of electrical and electric equipment. By ensuring this product is disposed of correctly, you will help prevent potential negative consequences for the environment and human health, which could otherwise be caused by inappropriate waste handling of this product. The recycling of materials will help to conserve natural resources.

For more detailed information about recycling of this product, please contact your local city office, your household waste disposal service or the shop where you purchased the product.

EN

DECLARATION OF CONFORMITY

FR

PL

CZ

IT

EC DECLARATION OF CONFORMITY – EC DIRECTIVE 2006/42/EC ANNEX II 1A 

The manufacturer:

SCELL-IT

28 RUE PAUL DUBRULE

59810 LESQUIN

FRANCE

+33(0) 320 329 818

declares hereby that the following product:

Product designation:

- **E-5 / E-6 / E-T / E-7 / E-8 / E-SP / E-12 / E-HC / E-005 / E-008 / E-007 / E-007-T**
- **Universal quick charger 18V (E-CHARG)**

Complies with the following relevant conditions:

- **2006/42/EC Machinery Directive**
- **2014/35/EU Low Voltage Directive**
- **2014/30/EU Electromagnetic Compatibility Directive**

If the machine is modified without our knowledge and consent, this EC Declaration of Conformity will be voided.

Most important applied standards:

EN 60204-1:2006+A1:2009

EN ISO 12100:2010

EN 55014-1:2017

EN 55014-2:2015

Name of documentation officer:

Nadia FAYTRE

Address of documentation officer:

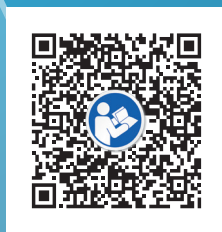
see address of manufacturer

Lesquin, 22-07-2021



Franck De Bruyne

(Managing Director)



28 rue Paul Dubrule - 59810 Lesquin - FRANCE

www.Scellit.com