



RIVET TOOL

INNOVATION

USER MANUAL



R 1 0 0



min.
Ø **2.4** mm



max.
Ø **4.8** mm



CARACTÉRISTIQUES

Longueur : 210 mm

Poids : 460 g

Matière corps et poignées : Fonte d'aluminium et acier

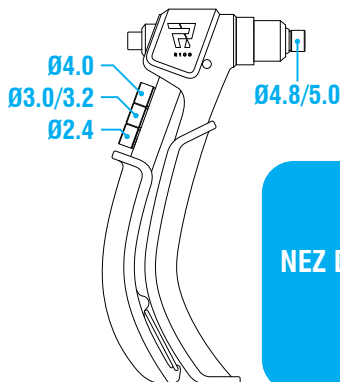
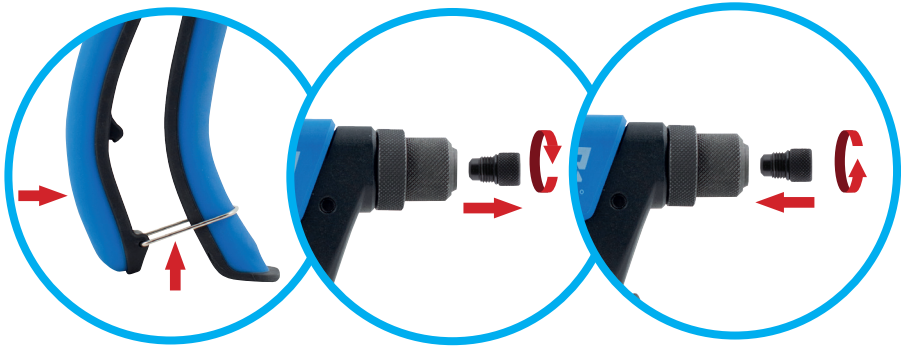
Matière grip poignées : Plastique ABS

Capacité d'usage :

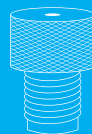
RIVETS	Ø2.4	Ø3.2	Ø4.0	Ø4.8
ALUMINIUM	✓	✓	✓	✓
ACIER	✓	✓	✓	
INOX	✓	✓	✓	



CHANGEMENT DE NEZ

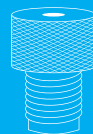


NEZ DE POSE

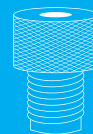


RIVET

Ø2.4
3/32"



Ø3.0/3.2
1/8"



Ø4.0
5/32"



Ø4.8/5.0
3/16"

RÉGLAGE DE LA COURSE

FR

EN

PL

CZ

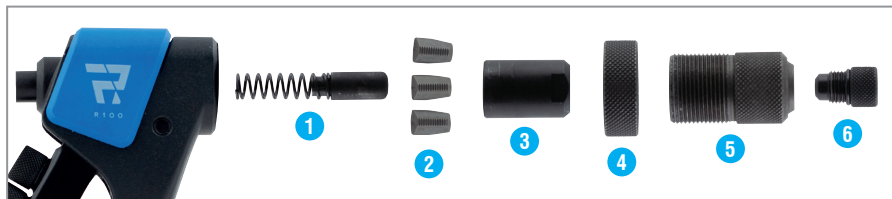
IT



UTILISATION



REPLACEMENT DES MORS



1 Ressort+Poussoir 2 Mors 3 Porte-mors 4 Bague de réglage 5 Porte-nez 6 Nez

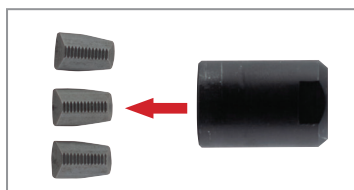
1. Dévisser le porte-nez



2. Dévisser le porte-mors avec une clef SW=15

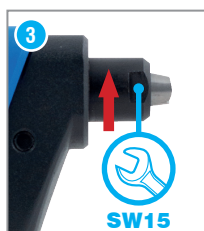
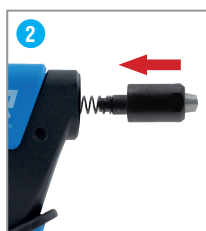


3. Enlever les mors usagés du porte-mors et les remplacer par un nouveau jeu ...



... en les plaçant 1 par 1 dans le porte mors

4. Remonter l'ensemble



SPECIFICATIONS

Length: 210 mm

Weight: 460 g

Body and handles material: Allow cast aluminium and steel

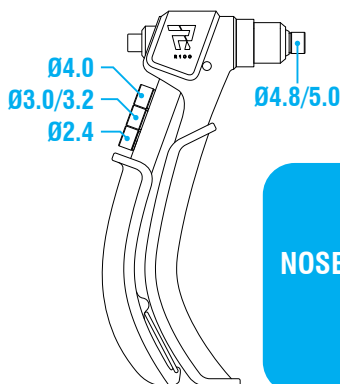
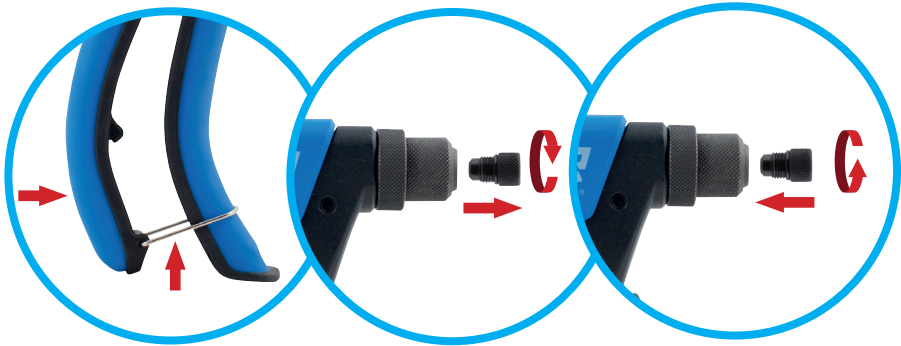
Handles grip material: ABS

Capacity:

RIVETS	Ø2.4	Ø3.2	Ø4.0	Ø4.8
ALUMINIUM	✓	✓	✓	✓
STEEL	✓	✓	✓	
STAINLESS STEEL	✓	✓	✓	



REPLACING NOSE PIECE

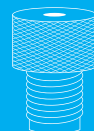


NOSE PIECES

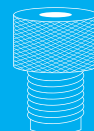
RIVET



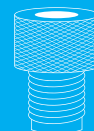
Ø2.4
3/32"



Ø3.0/3.2
1/8"



Ø4.0
5/32"



Ø4.8/5.0
3/16"

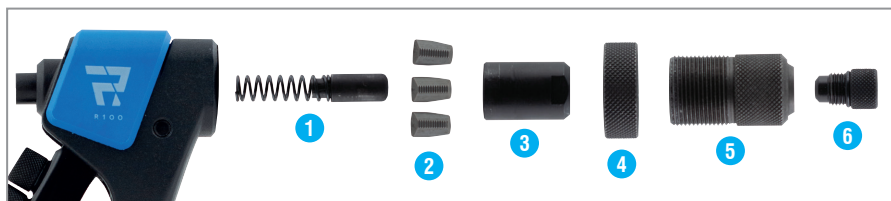
STROKE SETTING



OPERATION



UNINSTALLATION OF THE JAWS



- 1 Spring + Pusher 2 Jaws 3 Clamping sleeve 4 Setting ring 5 Front sleeve 6 Nose

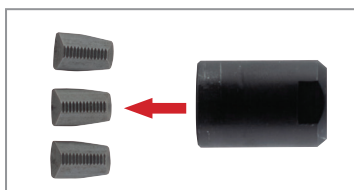
1. Unscrew the front sleeve



2. Unscrew the clamping sleeve with a wrench SW=15

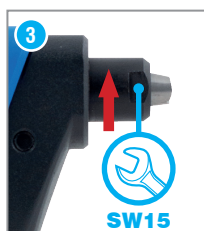
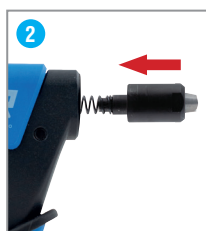


3. Remove the old jaw set from the clamping sleeve and replace them by new set...



... 1 by 1 into the clamping sleeve

4. Reassemble



SPECYFIKACJA

Długość: 210 mm

Waga netto: 460 g

Materiał głowica i uchwyt: Odlew aluminium i stal

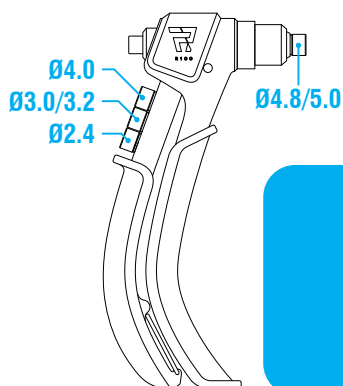
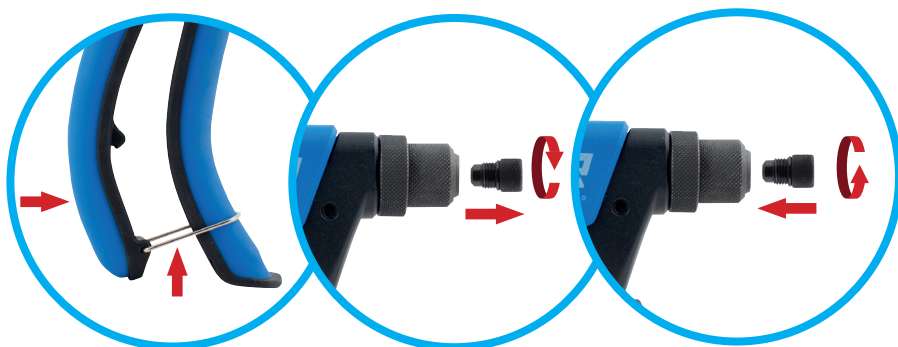
Materiał uchwyt: ABS plastik

Możliwe zastosowanie:

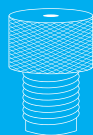
NITY	Ø2.4	Ø3.2	Ø4.0	Ø4.8
ALUMINIUM	✓	✓	✓	✓
STAL	✓	✓	✓	
STAL NIERDZEWNA	✓	✓	✓	



WYMIANA NOSKA



NOSKI



NITY

Ø2.4
3/32"



Ø3.0/3.2
1/8"



Ø4.0
5/32"



Ø4.8/5.0
3/16"

REGULACJA SKOKU

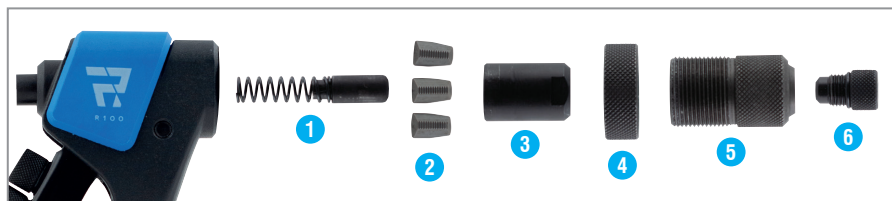
FR
EN
PL
CZ
IT



EKSPLOATACJA



ODINSTALOWANIE SZCZĘK



- 1 Sprężyna + Popychacz 2 Szczęki 3 Tuleja zaciskowa 4 Pierścień regulacyjny
5 Przednia tuleja 6 Noski

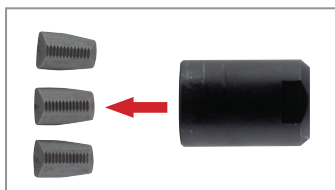
1. Odkręć przednią tuleję



2. Odkręć tuleję zaciskową za pomocą klucza SW=15

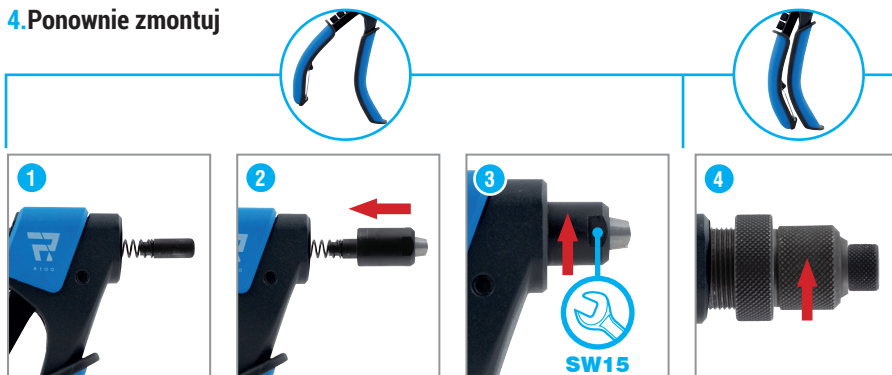


3. Wymij zużyty zestaw szczęk z tulei zaciskowej i wymień na nowy zestaw ...



... pojedynczo umieszczaj szczęki w tulei zaciskowej

4. Ponownie zmontuj



SPECIFIKACE

Délka: 210 mm

Hmotnost: 460 g

Materiál těla a rukojetí: Hliníková slitina a ocel

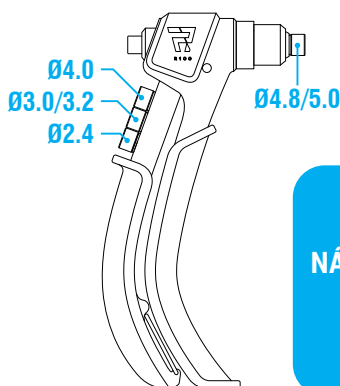
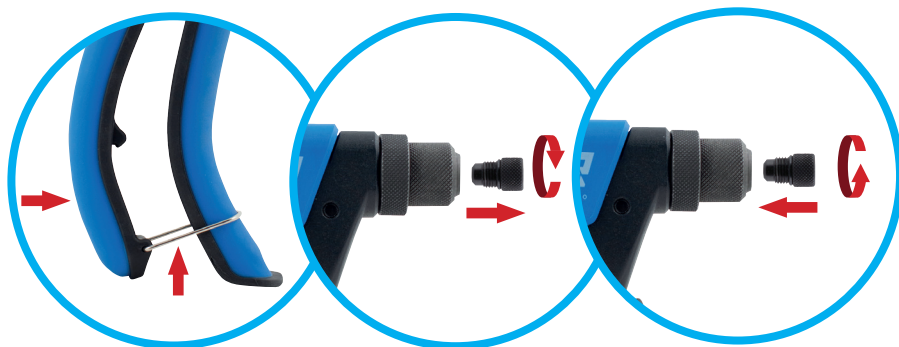
Materiál rukojetí: ABS plast

Kapacita nástroje:

NÝTY	Ø2.4	Ø3.2	Ø4.0	Ø4.8
HLINÍK	✓	✓	✓	✓
OCEL	✓	✓	✓	
NEREZOVÁ OCEL	✓	✓	✓	



VÝMĚNA NÁSADKY

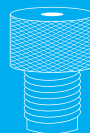


NÁSADKY



NÝTY

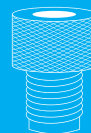
Ø2,4
3/32"



Ø3,0/3,2
1/8"



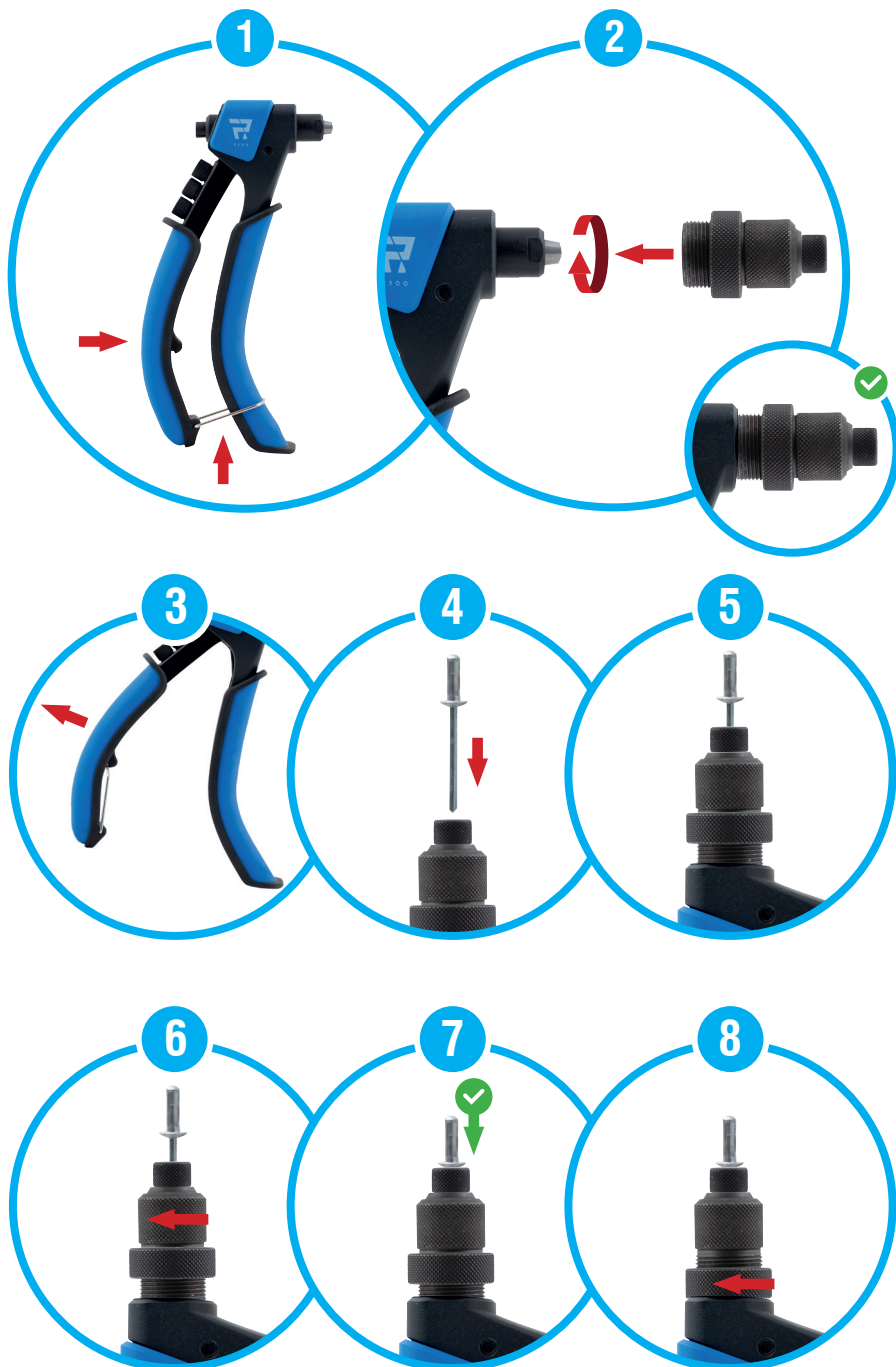
Ø4,0
5/32"



Ø4,8/5,0
3/16"

NASTAVENÍ ZDVIHU

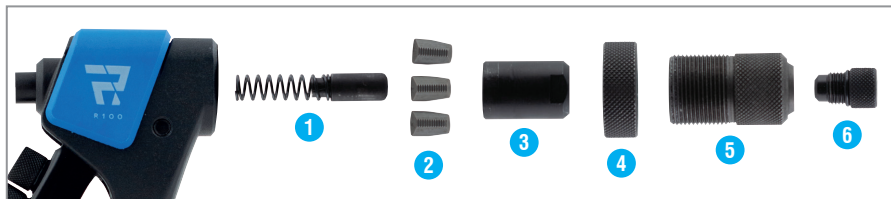
FR
EN
PL
CZ
IT



POUŽITÍ



VÝMĚNA ČELISTÍ



- 1 Pružina + Přítlačný kolík 2 Čelisti 3 Pouzdro čelistí 4 Nastavovací kroužek
5 Pouzdro násadky 6 Násadky

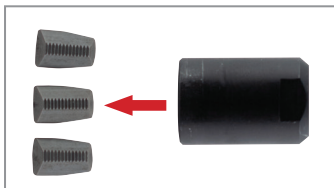
1. Odšroubujte pozdro násadky



2. Odšroubujte pouzdro čelistí pomocí klíče 15

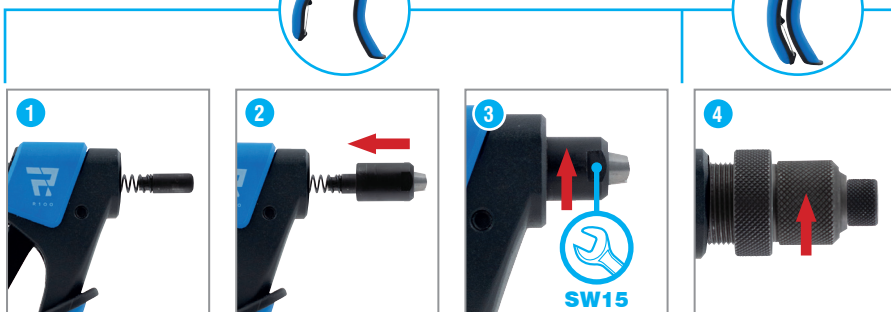


3. Vyjměte starou sadu čelistí z pozdra čelistí a nahradte ji novou sadou



... čelisti jednu po druhé do pouzdra čelistí

4. Znovu sestavte



SPECIFICHE TECNICHE

Lunghezza: 210 mm

Peso: 460 g

Materiali del corpo e dell'impugnatura:

Fusione di alluminio e acciaio

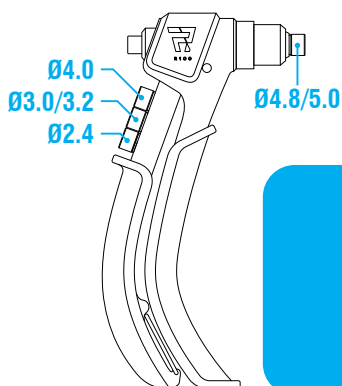
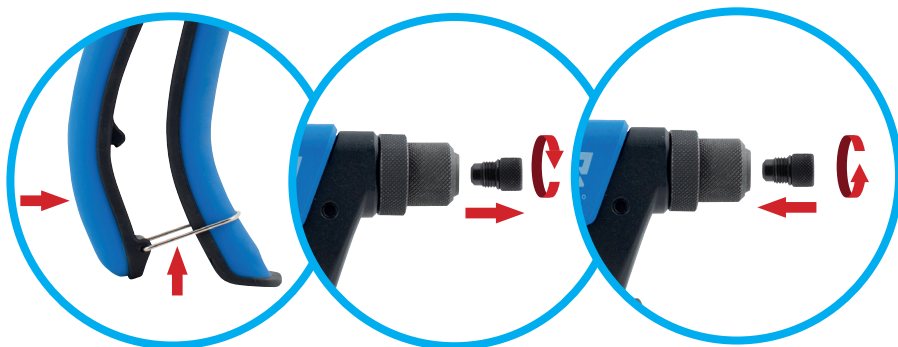
Materiale della copertura dell'impugnatura: ABS

Gamma di utilizzo:

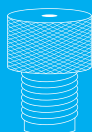
RIVETTI	Ø2.4	Ø3.2	Ø4.0	Ø4.8
ALLUMINIO	✓	✓	✓	✓
ACCIAIO	✓	✓	✓	
INOX	✓	✓	✓	



SOSTITUZIONE DELL'UGELLO



UGELLI



RIVETTI

Ø2.4
3/32"

Ø3.0/3.2
1/8"

Ø4.0
5/32"

Ø4.8/5.0
3/16"

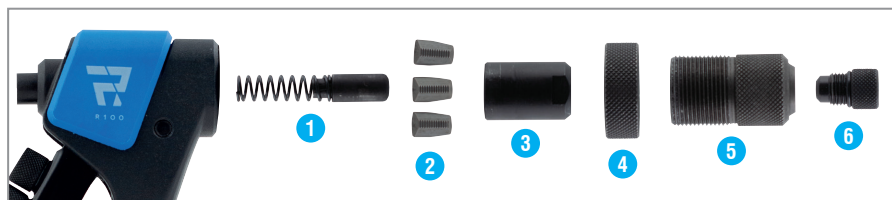
REGOLAZIONE DELLA CORSA



OPERAZIONI D'USO



SOSTITUZIONE DEI MORSETTI



- 1 Spintore e molla 2 Morsetti 3 Cono porta morsetti 4 Anello di regolazione
5 Cannotto porta ugello 6 Ugello

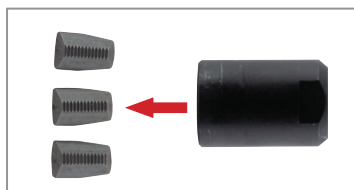
1. Smontare il cannotto porta ugello



2. Svitare il cono porta morsetti con una chiave SW=15



3. Estrarre i morsetti usurati dall'interno del cono e sostituirli con un nuovo set...



... un morsetto dopo l'altro all'interno del cono porta morsetti

4. Rimontaggio





28 rue Paul Dubrule - 59810 Lesquin - FRANCE

www.Scellit.com