

element<sup>®</sup>  
hand & power tools system

ALUMINIUM - ACIER - INOX  
Ø3.0 Ø3.2 Ø4.0  
Ø4.8 Ø5.0

PR500 **A**



■ Scell-it<sup>®</sup> ■

# ENGLISH



## CAUTION

Read this manual carefully before use the tool !  
It is **IMPORTANT** to follow the safety instructions for adequate protection against injuries:

- This tool should be used exclusively to apply blind rivets prescribed as **TOOL CAPACITY**. It cannot be used for other purpose, such as hammer etc;
- This tool should be always used with compressed air supply with range 0,5Mpa ~ 0,7Mpa;
- **DO NOT** remove the mandrel collector (part assembly #25) when the tool is connected with air supply;
- **DISCONNECT** the air supply from the tool before changing the tool parts, such as nosepieces, jaw set, etc;
- **DO NOT** use the tool in the environment described as below:  
fuel and combustion air;  
temperature rapid rise;  
humidity, rain, storm and thundering;
- When the tool is suspended by the operation hook during use, be sure it cannot fall;
- When working with the tool, always carry protective goggles. The use of personal protective gear like clothes, gloves, safety helmet, and other necessary protection is highly recommended;
- Only use the tool in riveting holes on the workpieces to be fastened. The blind rivet could be ejected from the tool. Never aim the tool at yourself or at another person or animals;
- Use only genuine spare parts for repairs;
- Repair work must be carried out by skilled personal. When in doubt, always return the tool to the authorized distributors;

# TOOL CAPACITY

Blind Rivets 3,0/3,2mm - 4,0mm -4,8/5,0mm all materials

# TOOL SPECIFICATIONS

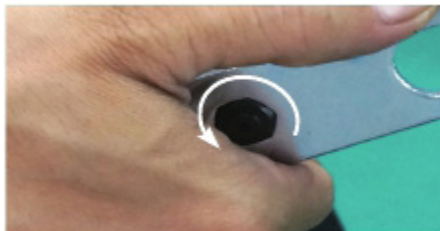
Air Supply Pressure:	0,5 Mpa ~ 0,7 Mpa
Output Force:	10,300 N ~ 14,420 N
Stroke:	19 mm
Net Weight:	1,42 kgs
Rivet Mandrel Release:	by vacuum

# START TO WORK

A. Choose correct nosepiece for the rivet to be set;

Rivets Dia.	ID No. on Nosepiece
3,0/3,2 mm	3.2 & 2.2/B
4,0 mm	4.0 & 2.7/C
4,8/5,0 mm	4.8/5.0 & 3.2/E

To use the wrench to change the nosepiece:



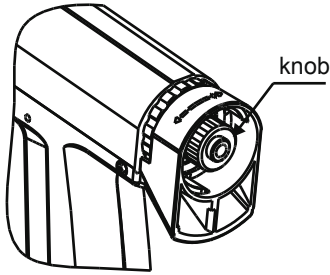
B. To be sure the mandrel collector installed on tool:



C. Check the air supply with pressure 0,5 Mpa ~ 0,7 Mpa, and connect the air supply hose on tool air adaptor;

# MANDRELS RELEASE POWER

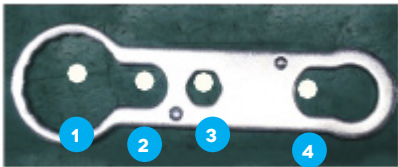
Mandrel released automatically by vacuum generated in the tool, and the power to release can be adjusted:



- turning the knob in «+» direction, power increased
- turning the knob in «-» direction, power reduced up to close;

# CLEANING AND MAINTAINANCE

Be sure, the air supply is disconnected before cleaning and maintainance! When necessary, the tool should be cleaned and worn parts should be changed periodically in order to keep the tool in a good working condition; Use the wrench to disassemble the necessary parts of the tool



- hole - 1 used for assembly rear adjuster (#22)
- hole - 2 used for clamping sleeve (#3)
- hole - 3 used for nosepieces (#1)
- hole - 4 used for front sleeve (#2)

To disassemble nosepiece (#1), front sleeve (#2) and clamping sleeve (#3), and clean the tool; checking the following wearable parts and change them when necessary: To install the tool after cleaning and/or changing the parts:

- 1 Put pusher (#5) and pusher spring (#6) into oil cylinder (#13):

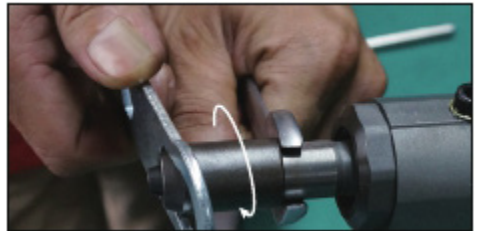


2. Put 3-jaw set (#4) into clamping sleeve

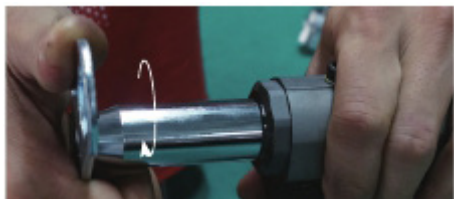


(#3):

3. Be sure the 3-jaw set (#4) is properly in the clamping sleeve (#3) and screw on the clamping sleeve (#3) on to the tool:



4. Install the front sleeve (#2) and nose-piece (#1):



After certain period of use, the tool stroke might be reduced, then the oil of the pneumatic tool is necessary to refill or changed.

1. Remove the screw (#11) by hexagon wrench:



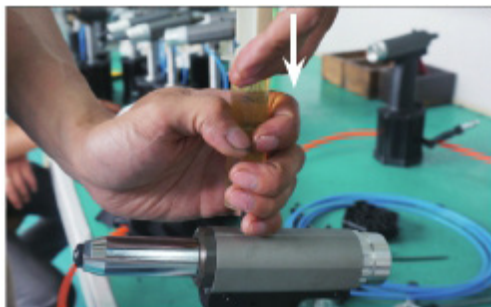
2. Connect the air supply, cover some cloth over the hole of the screw removed, pull the trigger and the oil will be leaked out of the tool:



3. Screw the oil inject adaptor (in the accessory pack) into the hole where screw (#11) removed:



4. Use the oil injector (in the accessory pack) to inject the oil slowly until not able to refill then, clean the oil on the tool and screw on the screw (#11) tight:



5. Test the tool stroke, if the stroke still getting less, it means there could be air in the oil cylinder, then the extra air needs to be released from the tool:

Connect the tool with air supply, pull the tool trigger 6 or 7 times, loosen the screw (#11), let the air leaked out, then screw on tight.



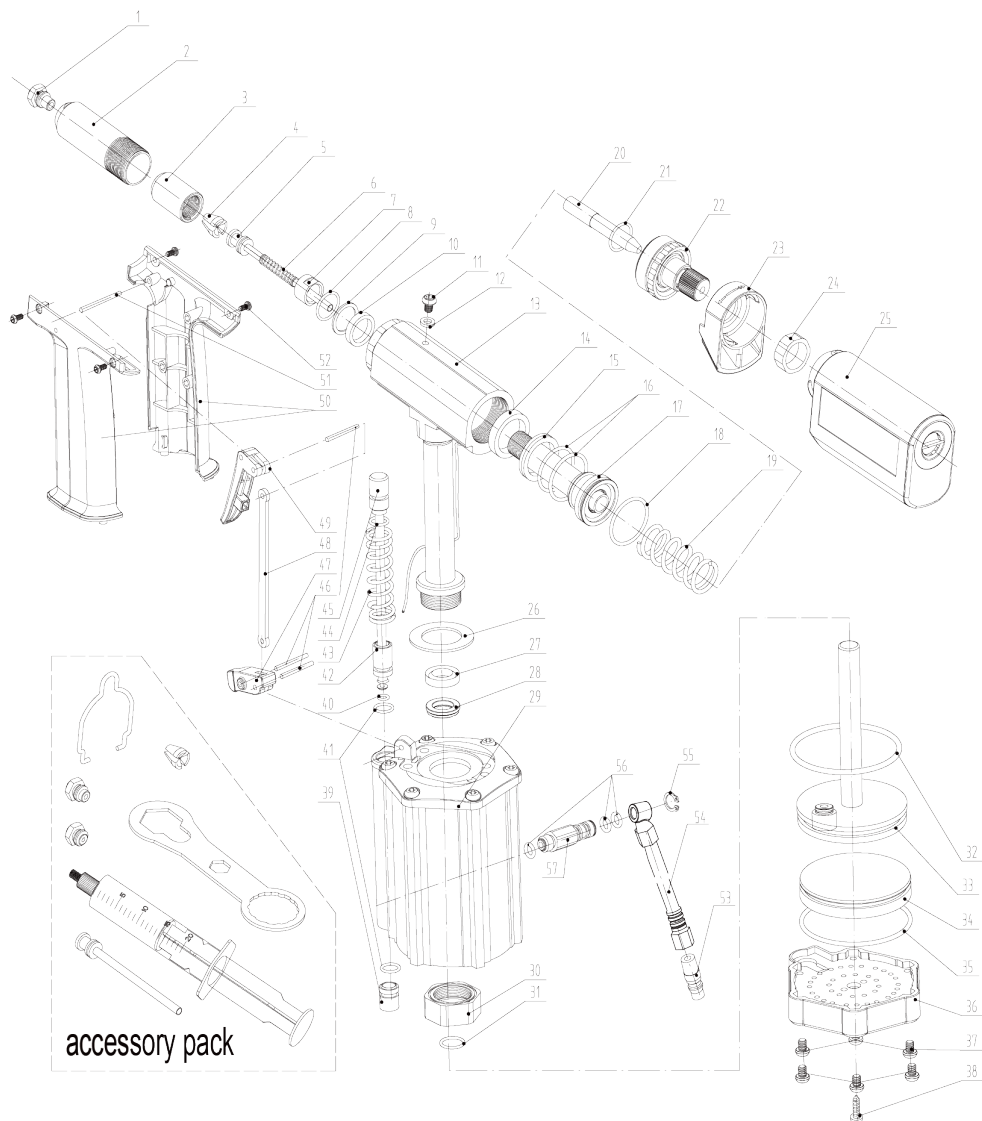
#### Note

When the tool setting smaller dia. Rivets, eg. 3,0mm or 3,2mm rivets, in order to avoid the rest mandrel jammed in the tool, it is recommended to change the smaller sized pusher (in the accessory pack) to replace the pusher (#5) in the tool.

Parts ID	Part No	Part Description	Part Qty on tool	Wea-
1	P09005-00	nosepiece E - 4,8/5,0mm	1	yes
2	A00001-00	assembly front sleeve	1	yes
3	P00003-00	clamping sleeve	1	yes
4	P00004-00	3-jaw set	1	yes
5	A00002-00	assembly pusher	1	yes
6	P00181-00	pusher spring	1	yes
7	P00173-00	clamping sleeve locknut	1	
8	F00021-00	O-ring	1	
9	P00047-00	piston pin washer	1	
10	F00022-00	U-ring	1	
11	P00009-00	screw	1	
12	F00002-00	washer	1	yes
13	A00038-00	assembly oil cylinder	1	
14	F00003-00	U-ring	1	
15	P00010-00	piston pin washer	1	
16	F00004-00	O-ring	2	
17	A00039-00	assembly piston pin	1	
18	F00012-00	O-ring	1	
19	P00174-00	return spring	1	
20	P00186-00	mandrel tube	1	
21	F00042-00	O-ring	1	
22	A00053-00	assembly rear adjuster	1	
23	P00136-00	mandrel collector house	1	
24	P00137-00	mandrel collector house nut	1	
25	A00119-00	assembly mandrel collector neutral	1	
26	P00017-00	oil cylinder washer	1	
27	F00006-00	U-ring	1	
28	P00018-00	piston shaf t washer	1	
29	A00045-00	assembly air cylinder	1	
30	P00022-00	assembly oil cylinder locknut	1	
31	F00007-00	O-ring	1	
32	F00023-00	O-ring	1	
33	A00012-00	assembly air cylinder piston shaft	1	
34	P00054-00	piston pedestal	1	
35	F00024-00	O-ring	1	
36	P00055-00	air cylinder pedestal	1	
37	P00021-00	air cylinder screw	6	
38	P00029-00	air cylinder pedestal screw	1	
39	P00030-00	switch lower base	1	
40	F00010-00	O-ring	1	yes
41	F00011-00	O-ring	1	yes
42	P00031-00	switch upper base	1	
43	P00032-00	switch shaf t spring	1	
44	F00012-00	O-ring	1	
45	A00013-00	assembly trigger shaft	1	
46	F00013-00	pin	3	
47	P00057-00	lever	1	
48	P00035-00	connecting rod	1	
49	P00058-00	short trigger	1	
50	A00008-00	assembly grips	1	
51	F00014-00	pin	1	
52	P00039-00	screw	4	
53	F00015-00	air adaptor	1	yes
54	A00118-00	assembly air adaptor	1	
55	F00048-00	A-circlip	1	

56	F00016-00	O-ring	3	yes
57	P00454-00	assembly air adaptor joint	1	
accessory pack				
	P09002-00	Nosepiece 3,0/3,2mm	1	yes
	P09003-00	nosepiece 4,0mm	1	yes
	P09051-00	hook	1	
	P00004-00	3-jaw set	1	yes
	A00009-00	oil injector	1	
	P09052-00	wrench	1	
	F00020-00	O-ring	1	
	P09055-00	oil inject adaptor	1	
	A00052-00	assembly pusher 4,0	1	yes





**CE CERTIFICATION**

This tool has been proved complying with the essential health and safety requirements of the Directive 2006/42/EC.

*Cet outil est conforme à toutes les réglementations des directives Machines (2006/42/EG) en vigueur.*

Certification Number: 4054021214