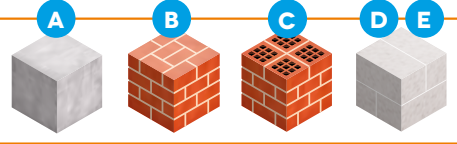


POLYVALENT INSULATING PLUG

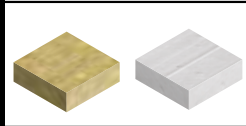
STEEL SCREW

**MATERIAL:**

CONCRETE
SOLID BRICK
HOLLOW BRICK
LIGHTWEIGHT
AGGREGATE CONCRETE
AERATED CONCRETE



SOFT INSULATION
AND INSULATION*



*WITH ADDITIONAL FLANGER Ø 90 OU Ø 140

European Technical
Assesment



FEATURES

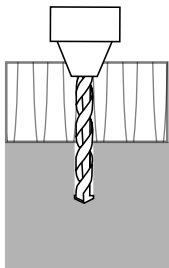
Material:

- Plug and washer = polyethylene
- Expansion screw=galvanized steel with polyamide PA6 coated tip

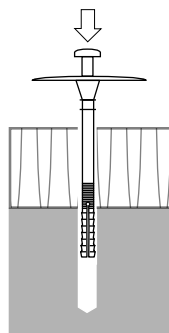
Characteristics:

1. Simple and fast setting through the insulation
2. Suitable for all type of material (ETE for ABCDE:.....)
3. Very good resistance in concrete, solid masonry; hollow masonry and aerated concrete (up to 120kg)
4. Low anchorage depth (25mm), 8mm hole - time saving
5. Very low thermal conductivity (λ) thanks to the head of the screw
6. Torx 40
7. Can be used with diameter 90 and 140 washer for soft insulating.
8. For insulation 70-270m

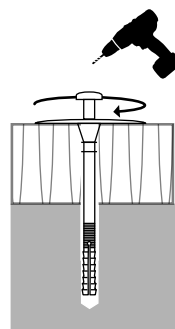
INSTALLATION



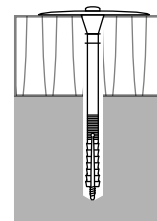
1) Drill the support Ø8.



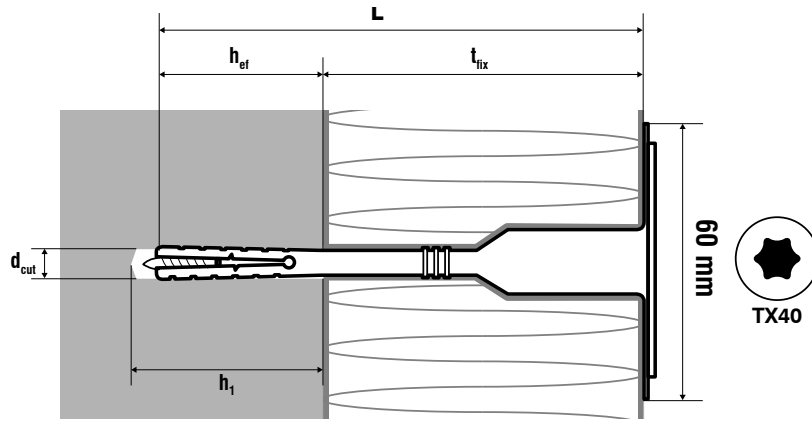
2) Insert the plug through the insulant.



3) Set by tapping the nail with a hammer (2-3 strokes).



4) Anchorage depth 80mm. In renovation structural layers such as glue or coating are included in the anchorage length of the plug.



L	THICKNESS TO FIX MAX t _{fix}	d _{cut}	h _{ef}	h ₁	Reference	
mm	mm	mm	mm	mm		
95	70	8	25	35	FITORX08095	200
115	90	8	25	35	FITORX08115	200
135	110	8	25	35	FITORX08135	200
155	130	8	25	35	FITORX08155	200
175	150	8	25	35	FITORX08175	200
195	170	8	25	35	FITORX08195	200
215	190	8	25	35	FITORX08215	100
235	210	8	25	35	FITORX08235	100
255	230	8	25	35	FITORX08255	100
275	250	8	25	35	FITORX08275	100
295	270	8	25	35	FITORX08295	100

RECOMMENDED LOADS

Allowed loads are calculated on the basis of the loads indicated in ETE with partial coefficients:

- Partial security coefficient of the material $\gamma_M = 2,0$
- Partial security coefficient of the action $\gamma_f = 1,4$

