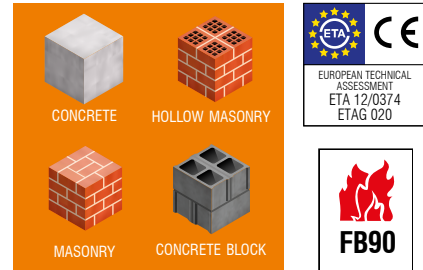


NYLON LONG EXPANSION PLUGS

HEX SCREW WITH FLANGE



FEATURES

- PA6 nylon plug
- Zinc plated or A4 stainless steel screw

features

- ETA for concrete, semi-solid and hollow brick,
- Suitable also for aerated concrete, stone (dense structure, trials recommended)
- Excellent fixing in all materials thanks to long expansion (h_{nom} = 70mm)
- Solid materials: uniform 'swelling' of the plug by quadruple expansion (NK= 120 à 300 daN)
- Hollow materials: the plug forms a 'knot' when expanded
- 100% nylon plug: excellent lifetime, resists to temperature from -20°C to +40°C
- Fire resistant for 90 minutes (FB90) for diameter 10 in concrete and up to 80kg load
- Easy screwing with TORX30 (diam.8) and TORX40 (diam.10) (G•L and G•LH)
- Wide range of application:
screw: countersunk head, hexagonal head, hexagonal head with Flange
- Screw: zinc plated and stainless steel
- Plug: 8 and 10, length 80-240mm

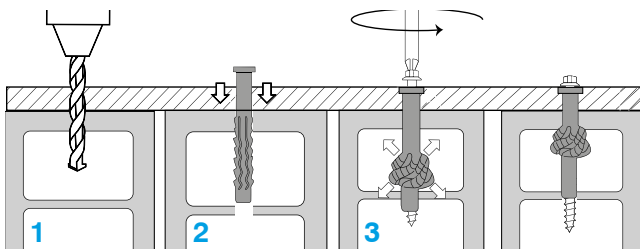
APPLICATIONS EXAMPLES

- Short versions
 - light wooden or metal frames
- Long versions
 - frames and siding
 - cladding
 - windows
 - rafters

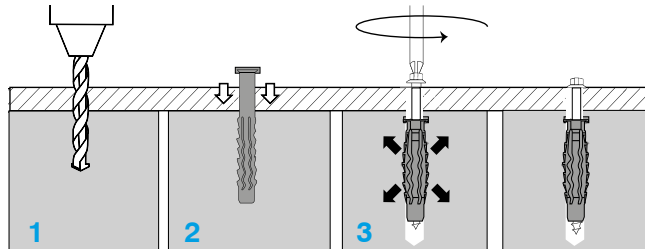


INSTALLATION

Hollow walls



Solid walls



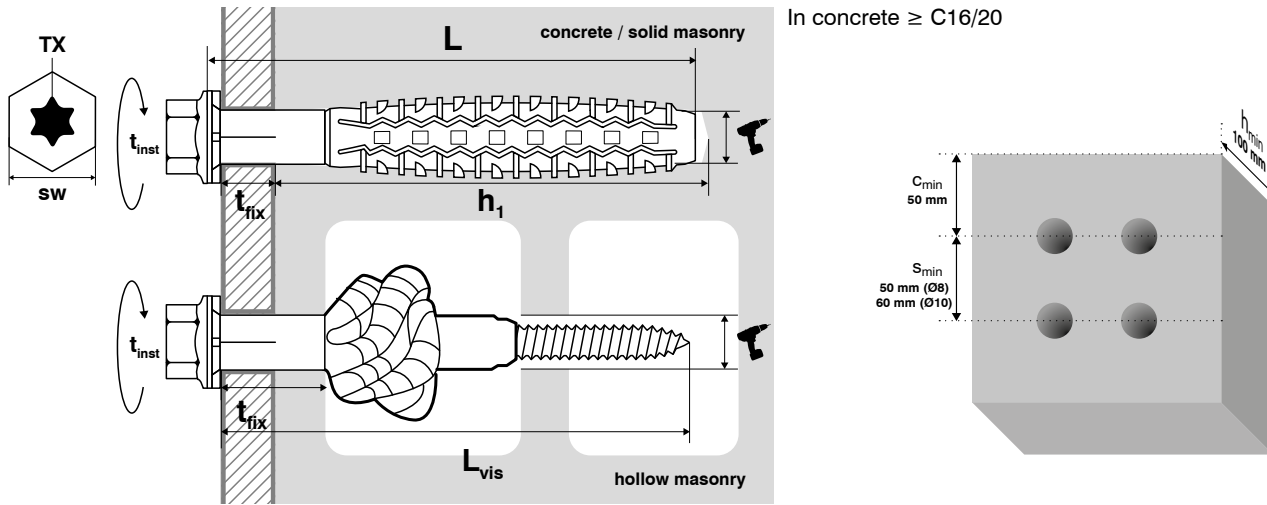
- 1)** • drill without damaging the concrete structure and while respecting the drilling method recommended in annex 6 of the ETA 12/0374.
- Remove dust from the hole

- 2)** The nylon plug is set by light hammer strokes

- 3)** Special screw is screwed until the screw head touches the plastic ring. The plug is correctly installed if the plastic ring does not turn in the hole and if no more movement of the screw is possible.

If installing in hollow materials, be sure that the expansion happens (by 'knotting' in the support material)

DIMENSIONS & APPLICATIONS DATAS



In concrete ≥ C16/20

Ø	L	t _{fix}	T	h ₁	TX	L _{vis}	SW	Ø _{vis}	REFERENCES
Diameter	Length	T _{fix}	Ø drill	drill depth	socket	screw length	socket wrench	screw diameter	steel screw
10	80	10	10	70	TX40	85	13	7.0	G-LH10080
	100	30	10	70	TX40	105	13	7.0	G-LH10100
	120	50	10	70	TX40	120	13	7.0	G-LH10120
	140	70	10	70	TX40	140	13	7.0	G-LH10140
	160	90	10	70	TX40	165	13	7.0	G-LH10160
	200	130	10	70	TX40	205	13	7.0	-
	240	170	10	70	TX40	245	13	7.0	-
	260	190	10	70	TX40	265	13	7.0	-

RECOMMENDED LOADS

The loads below are based on values indicated in ETA n°12/0090 with application of:
 - partial security coefficient γ_M of ETA and ETAG 014.
 - partial action coefficient $\gamma_F = 1,4$.

