

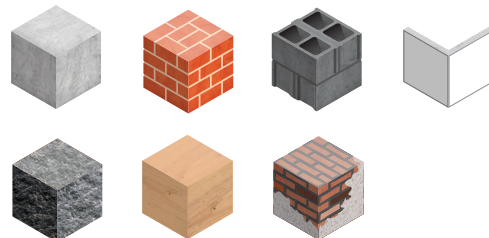
# UNIVERSAL PLUG

**MUTP**



25 plugs cluster

CONCRETE  
SOLID BRICK  
CONCRETE BLOCK  
DRYWALL  
STONE  
WOOD  
ANCIENT WALL

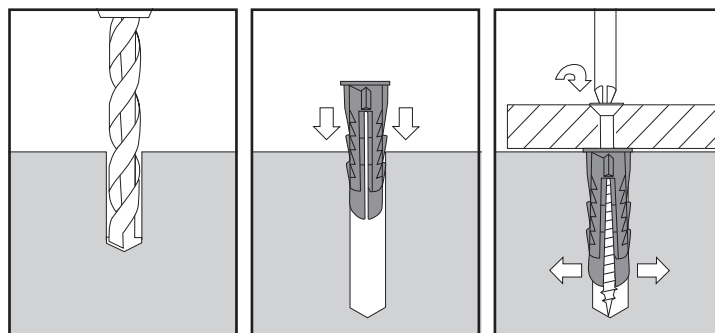


## FEATURES

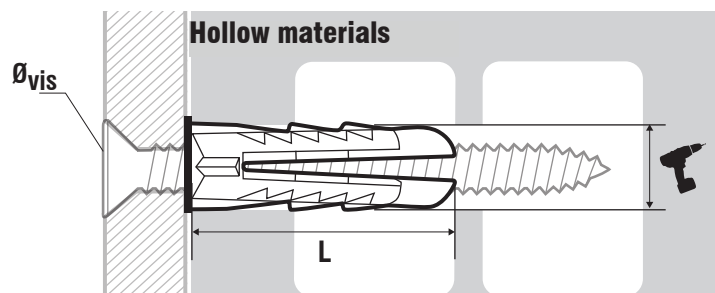
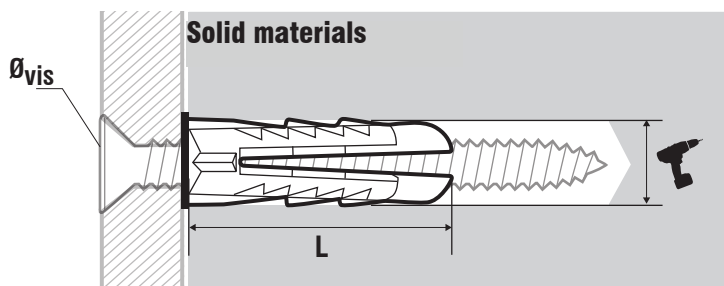
### Advantages:

- **Versatile:**
  - Suits all materials
  - Can be used with wood screws, metric screws, nails ...
- **Powerful:**
  - Strong fixing in all material types.
  - Anti-rotation wings for an optimum grip.
- **Robust:**
  - Unbreakable polypropylen.
- **Handy:**
  - 25 plugs cluster.

## INSTALLATION



## DIMENSIONS & APPLICATION DATAS



Ø	L	T	Ø <sub>vis</sub>	Reference
mm	mm	mm		
<b>6.0</b>	25	6	VBA 3 à 5 mm	<b>MUTP06</b>
<b>8.0</b>	30	8	VBA 4 à 7 mm	<b>MUTP08</b>
<b>8.0 PAV</b>	30	8	Patte à vis M5 à M7	<b>MUTP08M</b>
<b>10.0</b>	45	10	VBA 5 à 9 mm	<b>MUTP10</b>