



# HAND TOOL

FOR BLIND RIVETS

## USER MANUAL

# E-500RH-R

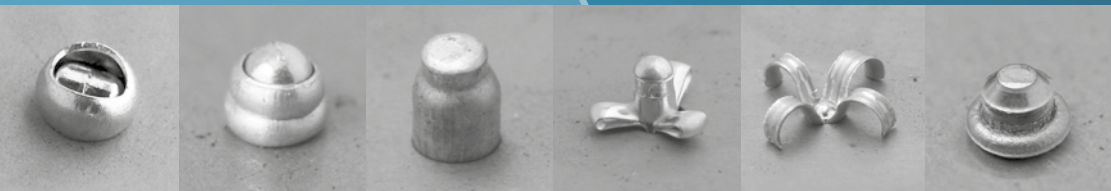
DESIGNED IN FRANCE BY  
**Scell-it®**



min.  
Ø **3.0** mm



max.  
Ø **4.8** mm



# TOOL CAPACITIES AND SPECIFICATIONS

**Capacities:** Ø3.0 à 4.8 mm (4.8mm for aluminium and steel only)

**Length:** 255 mm

**Weight:** 0.7 kg

**Body material:** cast aluminium

**Handles material:** ABS

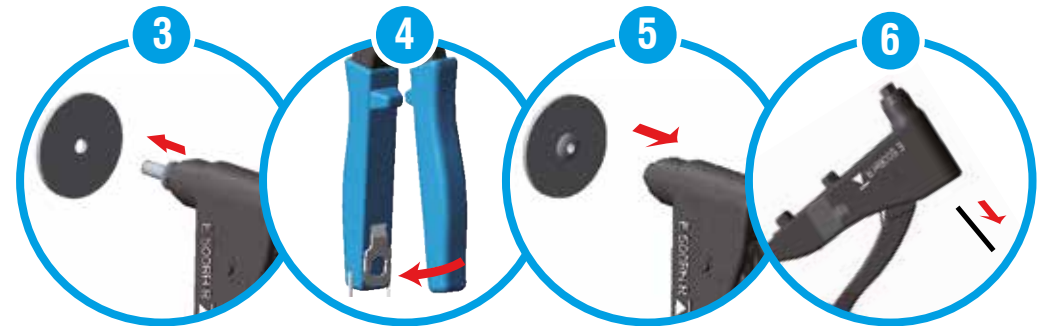
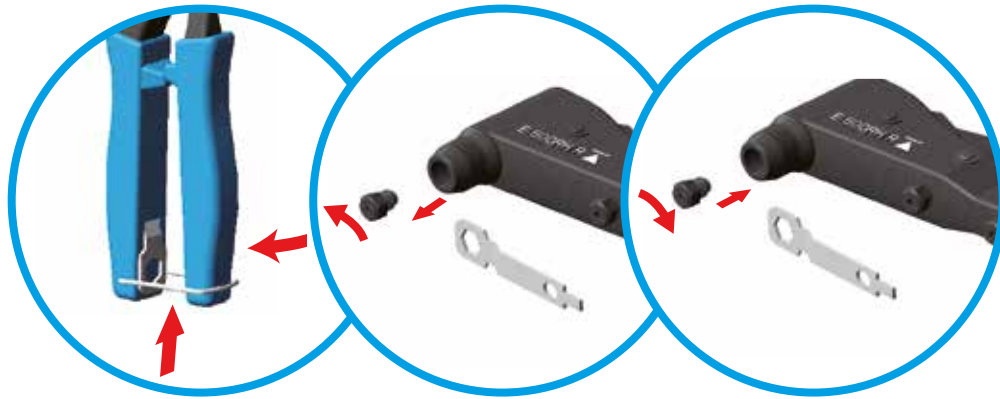


# OPERATION

FR  
EN  
PL



# SETTING



WRENCH

NOSES PIECES



B : Ø3.0/3.2



C : Ø4.0



D : Ø4.8/5.0

# UNINSTALLATION OF JAW

## 1. SCREW OFF THE JAW WITH THE WRENCH



## 2. SCREW ON THE NEW JAW WITH THE WRENCH

