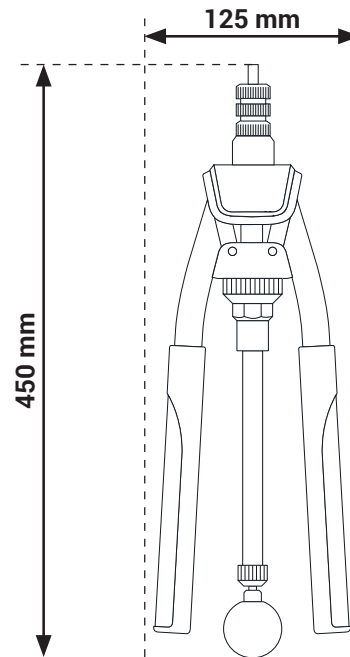


**NEW GENERATION LEVER TOOL FOR RIVNUTS M4 - M10 - WITH QUICK UNSCREW**

**N300-T**



weight = 1,62kg

**FEATURES**

1. Professional lever tool for rivnuts
2. Geared transmission: 3x less effort than standard tools
3. Quick release rod (N300-T version)
4. 5 mandrels and nosepieces supplied:  
M4-M5-M6-M8-M10
5. Materials:  
body and levers = steel  
grip handle = ABS
6. 1 year warranty

**CAPACITY**

RIVNUTS	M4	M5	M6	M8	M10
ALUMINIUM	✓	✓	✓	✓	✓
STEEL	✓	✓	✓	✓	✓
STAINLESS STEEL	✓	✓	✓	✓	✓

**PACKAGING**



Cardboard box : 505x185x45mm  
Reference : **N300-T**



Aluminium box : 535x220x45mm  
Reference : **N300-T-S**

**Included :**

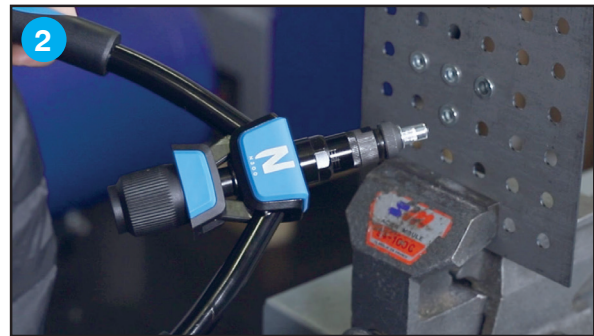
1. 1 N300-T tool
2. 5 mandrels and M4 - M10 nose pieces
3. Assortment of nuts (N300-T-S kit version)

MANUAL

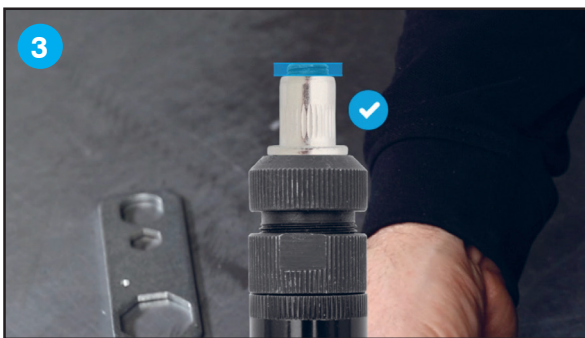
# Installing the rivnut



Fit the mandrel and nose that corresponds to the diameter of the rivnut (M4, M5, M6, M8 or M10).



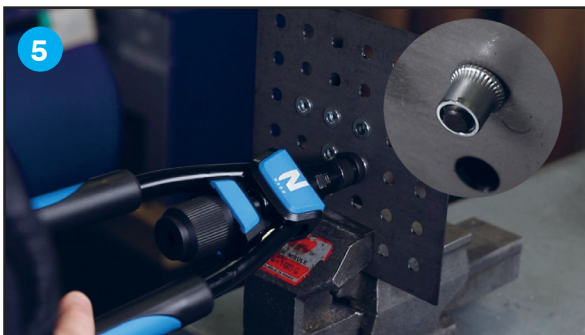
Fully spread the arms of the N300 and fit the rivnut onto the mandrel as far as the anvil (nose cone).



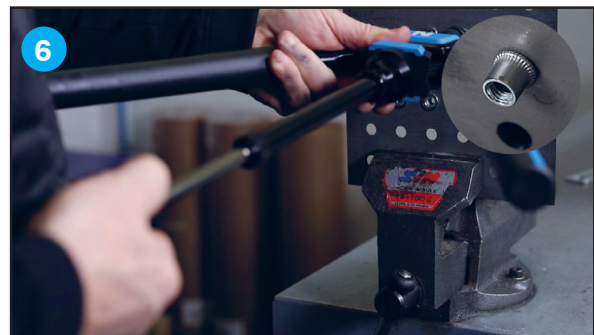
Advice: Let the mandrel protrude slightly to guarantee a good connection of the mandrel and rivnut



To adjust the stroke: loosen the retaining nut then turn the anvil and sleeve parts to increase/reduce the stroke (possible adjustment from 1 to 10mm). Then retighten. Diagram shows the ideal rivnut deformation.



Setting the nut:  
Insert the rivnut in the plate drilling hole.  
Close the arms of the tool to set the rivnut.



Remove the tool:  
open arms  
Pull the quick release rod to remove the N300-T tool

## How to change the nosepieces and jaws.



Watch the video