

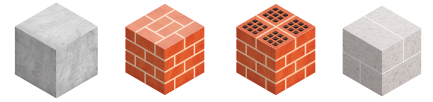
DIRECT FIXING SCREW A4 STAINLESS STEEL

BETASPEED



COUNTERSUNK HEAD
A4-BTS

CONCRETE
SOLID BRICK
HOLLOW BRICK
AERATED CONCRETE

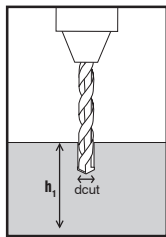


FEATURES

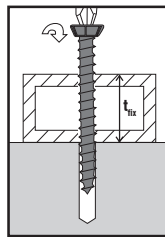
direct fixing system by screwing for light duties they allow a direct mounting, fast and sure of all types of window frames (wood, metal, PVC)

- Material:**
A4 stainless steel (316L stainless steel)
- Versions:**
countersunk head
- Applications:**
fixing of frames and window frames
 - countersunk head is recommended for aluminium or PVC window frames
 - reduced head is recommended for wooden window frames
 fixing of joists...
- Support materials:**
concrete, solid and semi-solid masonry, aerated concrete dense natural stone (in that case in situ trials are recommended, use setting data for solid masonry)
- advantage:**
- fast and easy setting without plug thanks to special thread
 - no constraints in support materials when setting (reduced edge distance and spacing)
 - removable
 - torx socket guarantees excellent torque transmission during installation
 - very wide range: 72-152mm

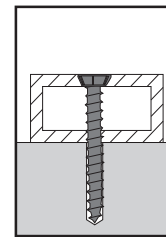
INSTALLATION



drill according to the **dcut** diameter and depth **h₁**, clean the hole



insert the **BETASPEED** screw through the material to be fixed



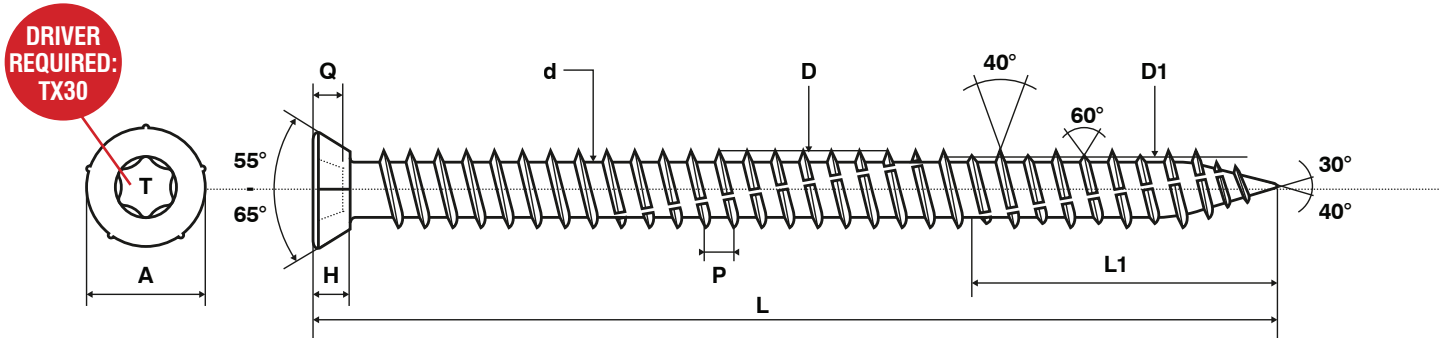
screw until the limit of the part to be fixed

INSTALLATION DATAS

h_{ef} : anchorage depth
h₁ : drill depth
t_{fix} : fixing part thickness

Ø	L mm	thread type	Ø perçage mm	Concrete			Solid Brick			Hollow Brick			Références
				h ₁ mini mm	h _{ef} mini mm	t _{fix} maxi mm	h ₁ mini mm	h _{ef} mini mm	t _{fix} maxi mm	h ₁ mini mm	h _{ef} mini mm	t _{fix} maxi mm	
Ø 7,5	72	total	6	40	30	42	50	40	32	70	60	12	A4-BTS75072F
	92	total	6	40	30	62	50	40	52	70	60	32	A4-BTS75092F
	112	total	6	40	30	82	50	40	72	70	60	52	A4-BTS75112F
	132	total	6	40	30	102	50	40	92	70	60	72	A4-BTS75132F
	152	total	6	40	30	122	50	40	112	70	60	92	A4-BTS75152F

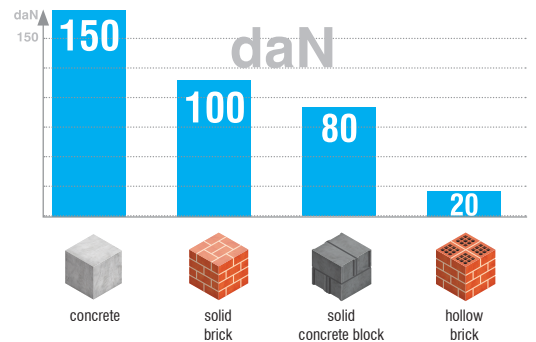
DIMENSIONS



L mm	thread type	L1 mm	d mm	D mm	D1 mm	T mm	A mm	Q mm	H mm	P mm
72 (+/- 1,5)	total	25 (+/- 3,0)	5,30	7,35 (+/- 0,15)	6,70	TX30	11,3 (+/- 0,5)	2,5 (+/- 0,2)	3,20	2,60
92 (+/- 1,5)		30 (+/- 3,0)								
112 (+/- 2,0)										
132 (+/- 2,0)										
152 (+/- 2,0)										

RECOMMENDED LOADS

the loads indicated are for information and based on construction site trials. These are tensile and shear values for standard anchorage depths h_{ef} indicated in the table of dimensions. the security coefficients are included;



ADDITIONAL PRODUCTS



Colour	Reference	For
	RAL 8014	BTS8014C VFD-F, BTS
	RAL 9005	BTS9005C VFD-F, BTS
	RAL 9010	BTS9010C VFD-F, BTS
	RAL 8014	VFD8014C VFD-R



the cap fixes very well on to the screw head thanks to torx socket