

HD

NATURAL GRIP EXPANSION PLIERS

Description

Fitted with a handle which allows an installation without any shocks and protects the user's hand.

The HD setting tool offers easy and flawless installation at a low cost.

Features

- "Soft Touch" handle: pleasant and ergonomic grip.
- Saves space with lockable handle in closed position.
- Suitable for expanding metal anchors M4 to M6.

Technical details

For setting hollow wall anchors range : M4 to M6

Dimensions: 15 x 19mm

Weight: 500g

Material: Brushed aluminum

Packaging details

Ref: "HD-PACK"

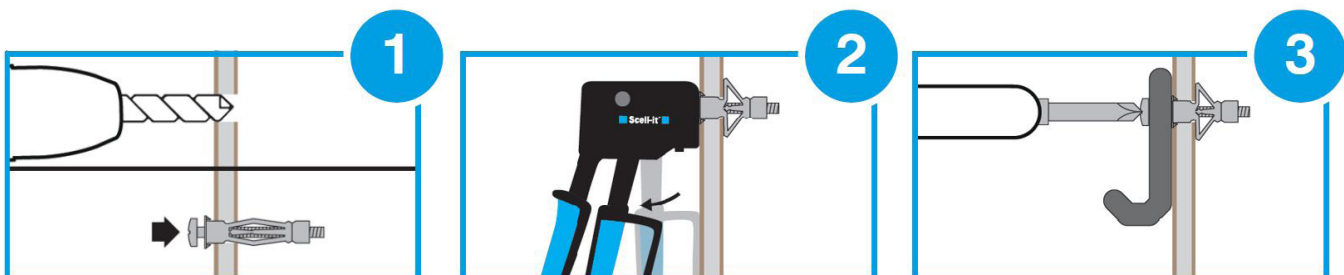
Packaging made of sturdy and very durable plastic.

The kit contains:

- One HD clamp
- 10 Spyder M4x33 dowels with screws
- 5 Spyder M5x37 dowels with screws



Setting instructions



Drill the support to the specified diameter.

Insert the dowel flush with the hole.

Unscrew the screw by +/- 4 mm.

Insert the pliers between the head of the screw and the collar of the dowel.

Operate the pliers to expand the anchor.

Remove the screw to position the object to be fixed.

Screw the assembly together using a screwdriver.