



RIVET NUT SETTING TOOL

USER MANUAL

E-360NH



DESIGNED IN FRANCE BY
Scell-it®

min.

M3



max.

M6

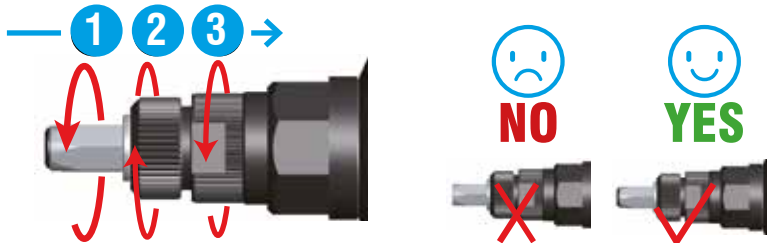
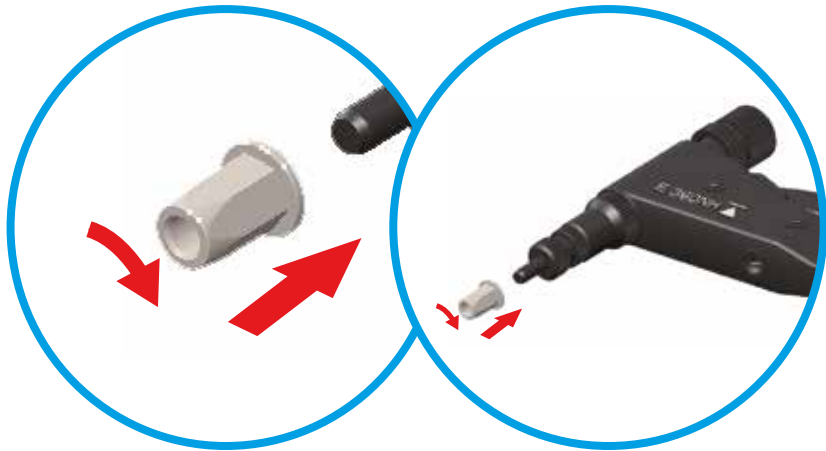


TOOL CAPACITIES AND SPECIFICATIONS

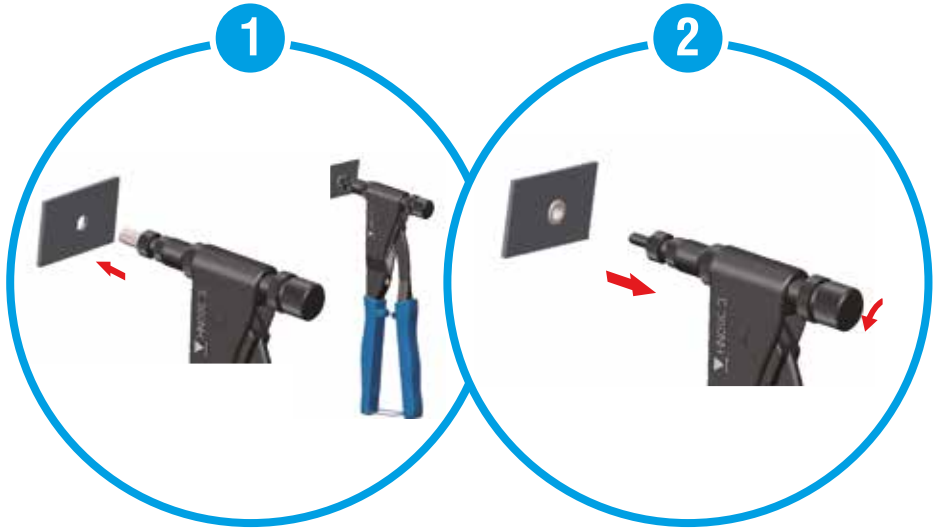
Capacities: M3 to M5 - M6 (aluminium and steel only)
Length: 280 mm
Weight: 0.8 kg
Body material: cast aluminium
Handles material: ABS



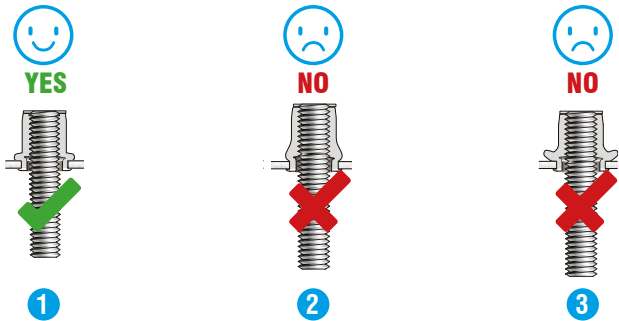
SETTING



OPERATION



FINISH SETTING



- 1 Correctly set
- 2 Not fully set
- 3 Over-set. Do not pull the rivet nut up too tightly as you may strip the thread in the rivet nut or damage the tool mandrel.

UNINSTALLATION OF PULLER

1. SCREW OFF ANVIL AND LOCKNUT



2. PULL OUT THE PULLER



3. INSERT THE PULLER FROM THE TOOL BACK AND SCREW ON LOCKNUT THEN ANVIL



Note : anvil size and puller size shall be the same