



# TWO HANDS

OPERATED NUTTOOL

USER MANUAL

## E-410NV

DESIGNED IN FRANCE BY  
**Scell-it®**



min.

**M4**



max.

**M10**

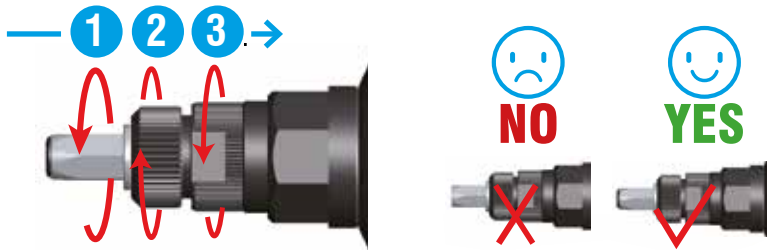
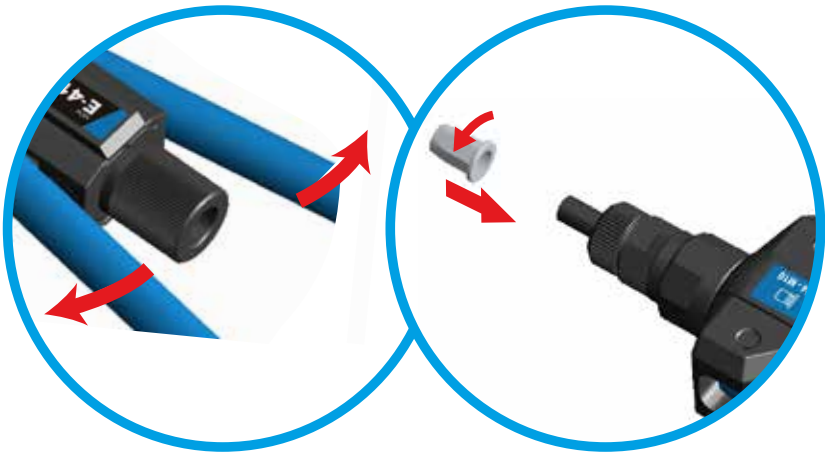


# TOOL CAPACITIES AND SPECIFICATIONS

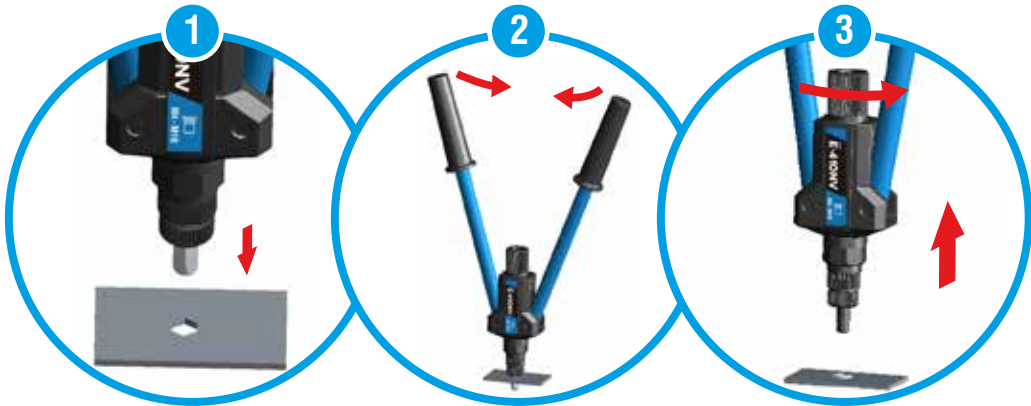
Capacities: M4 to M10  
Length: 485 mm  
Weight: 2.0 kg  
Levers: Steel  
Handle material: ABS



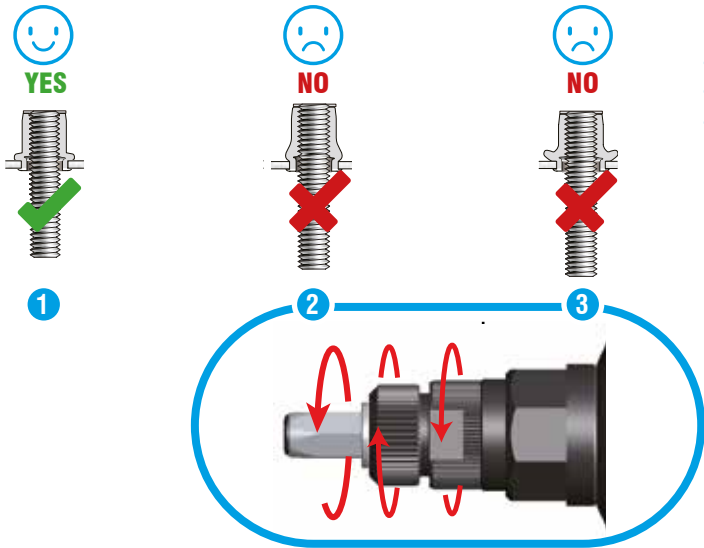
## SETTING



## OPERATION



## FINISH SETTING



- 1 Correctly set
- 2 Not fully set
- 3 Over-set. Do not pull the rivet nut up too tightly as you may strip the thread in the rivet nut or damage the tool mandrel.

# UNINSTALLATION OF PULLER

## 1. SCREW OFF ANVIL AND LOCKNUT



## 2. PULL OUT THE PULLER



## 3. INSERT THE PULLER FROM THE TOOL FORWARD



## 4. SCREW ON LOCKNUT THEN ANVIL



Note : anvil size and puller size shall be the same