

OPTEE

Hollow Wall Anchor Setting Tool

■ Description

The Optee is a high quality manual setting tool for Hollow Wall Anchors. Its innovative design makes setting easier and its adjustable expansion system allows for the optimum expansion of the anchor, regardless of its length.

The Optee is another exclusive quality setting tool from Scell-it.

Dimensions: 18 x 8 cm

Weight: 300g

■ Features

- 1 Material: Brushed aluminum
- 2 Ergonomic handle: Allows quick and easy installation, smooth and effortless
- 3 Adjustable Expansion suitable for variable lengths.
- 4 Soft Touch support zone: Does not damage the wall when of use
- 5 Suitable for setting of hollow wall anchors M4 to M6

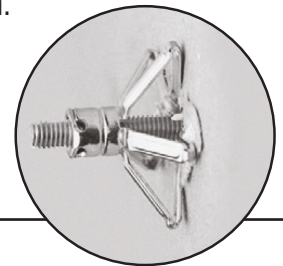


■ Benefits

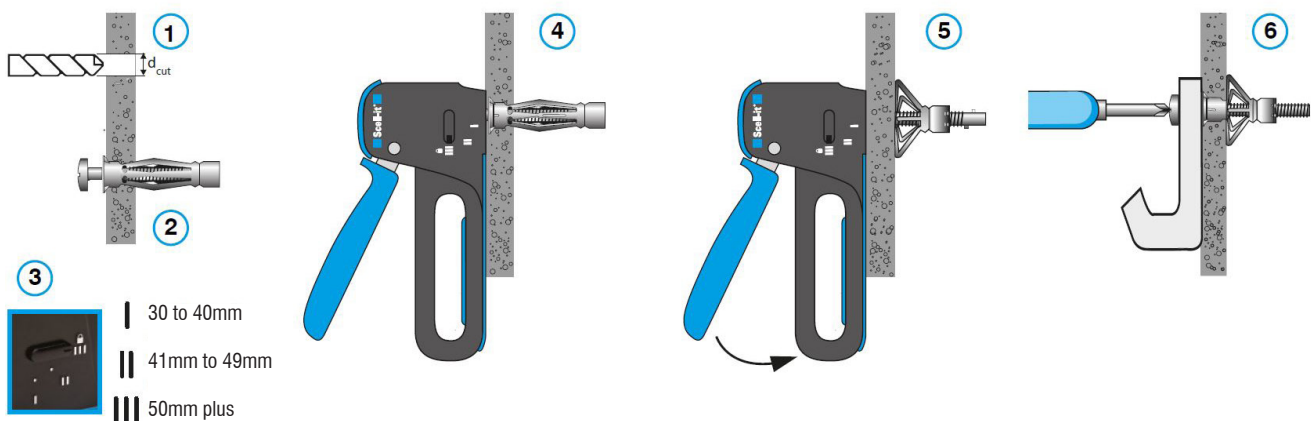
- Controlled expansion for perfect setting every time.
- No crushing of the partition.
- Light and easy to use.

■ Anchor Range

M4 to M6



■ Installation instructions



1. Drill the support to the "d_{cut}" diameter indicated.
2. Insert the dowel flush with the hole.
Unscrew the screw by +/- 4 mm.
3. Adjust the clamp according to the length of the ankle.

4. Insert the pliers between the head of the screw and the collar of the dowel.
5. Operate the forceps to expand the ankle.
6. Remove the screw to position the object to be fixed.
Screw the assembly together using a screwdriver.