



TWO HANDS

BLIND RIVET TOOL

USER MANUAL

E-64ORX

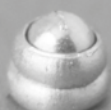
DESIGNED IN FRANCE BY
Scell-it®



min.
Ø **3.0** mm



max.
Ø **6.4** mm

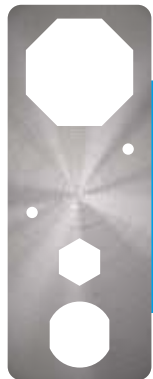
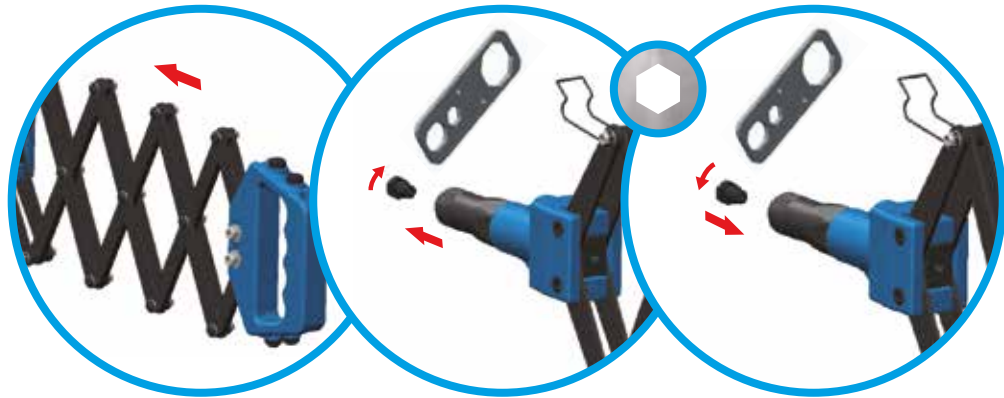


TOOL CAPACITIES AND SPECIFICATIONS

Capacities: Ø3.0 à 6.4 mm
Length (close): 310 mm
Weight: 2.8 kg
Body material: cast aluminium
Adjustable handles: Steel
Grip handles: ABS



SETTING

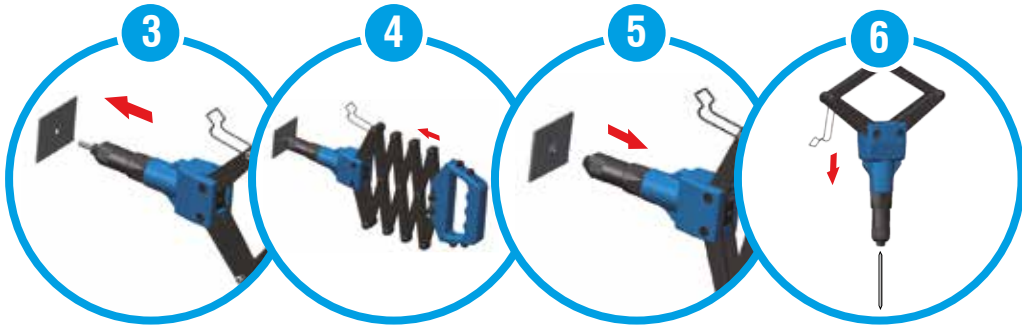


WRENCH

NOSES PIECES

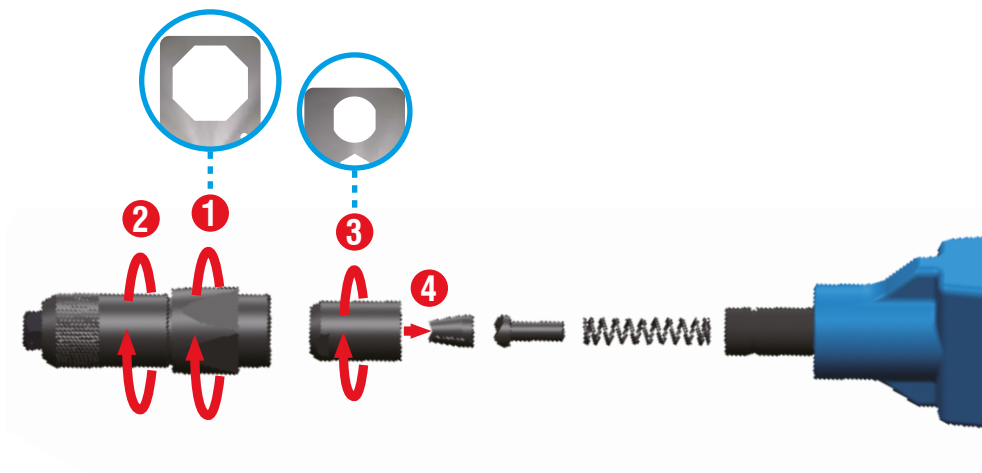


OPERATION



UNINSTALLATION OF JAW

1. SCREW OFF THE JAW WITH THE WRENCH



2. SCREW ON THE NEW JAW WITH THE WRENCH

